

2019-2020

JAPAN

PRIVATE JOURNEYS

INSIDER
JOURNEYS

Imagine the stories



Travelling – it leaves you speechless,
then turns you into a storyteller.

Ibn Battuta





**For over 25 years we've
been helping travellers
like you create unique
experiences and stories
that will last a lifetime.**

Explore Japan your way with our independent travel collection. Whether you want to experience the excitement of Tokyo, discover the cultural wonders of Kyoto or Koya-san, travel at amazing speeds on the Shinkansen, relax on the beaches of Okinawa or do all of the above, our selection of private itineraries and City Explorer packages will give you real insight into this amazing country.

All our experiences are designed with flexibility in mind by our Asia experts.

If you can't find exactly what you're looking for, we will tailor-make an itinerary to suit your specific needs.

Let us help you discover Asia
as an insider.

Imagine the stories...

See the world. Meet new people. Find yourself.
Have a story worth telling.

Anonymous





Contents

The Insider Journeys Experience	6
Japan	10
7 Day Tokyo & Kyoto Discovery	12
8 Day Japan Highlights	13
11 Day West Japan Experience	14
12 Day Ancient Japan & Snow Monkeys	15
14 Day Golden Route	16
16 Day Traditional Japan	18
Tokyo	20
Hakone	26
Kyoto	30
Osaka & Surrounds	36
Ryokans	40
Regional Japan	42
Terms & Conditions	46

The Insider Journeys Experience

At Insider Journeys, we make it easy to holiday in Asia.



Ginkakuji Temple, Kyoto

Our private travel collection will allow you to experience Asia as an insider with the flexibility to explore at your own pace. Whether it's getting up early to beat the crowds, staying longer to watch that amazing sunset or spending time chatting to a local, it's this level of flexibility that makes all the difference.

We know that to truly experience Asia, you need to wander off the tourist trail occasionally.

Our collection of private itineraries will provide you with experiences that a guidebook alone simply cannot offer.

Whether you're travelling with your partner, family, a group of friends or solo, connecting you with Asia's heart is what we do best.

Let us help you experience Asia as an insider!

A word from our travellers...

“

We enjoyed our Japan tour tremendously. The tour was made even more memorable with our tour guide who was very knowledgeable, kind and considerate. We have travelled extensively over the past 10 years and found our guide to be the best we have encountered. We will certainly be recommending Insider Journeys to all our friends.

JOHN & CAROL, QUEENSLAND

“

Our guide was brilliant – informative, friendly, professional, caring, well organised and flexible. This was another money-well-spent trip with Insider Journeys and our third in 20 years.

ALAN, SOUTH AUSTRALIA



Ready To Book Private Itineraries

Each of our unique, Ready to Book Private Itineraries are designed by our team of passionate Asia experts.

Every itinerary includes the must-see highlights and genuine experiences of Japan. From the moment your trip begins, our Private Itineraries provide a seamless travel experience.

To get a sense of the 'real' Asia, our itineraries take you off the tourist trail while ensuring you don't miss any of the must-see places. With plenty of free time and the services of knowledgeable local guides in each destination, you'll really feel like an insider!



City Explorer Packages

Our City Explorer packages offer the perfect introduction to the captivating cities in Japan. From the hustle and bustle of Tokyo to naturally beautiful Hakone, from traditional Kyoto to the nation's food capital of Osaka, these short stays include accommodation, airport transfers and sightseeing with knowledgeable, local English-speaking guides.

There's a range of accommodation options from which to choose. Book as a stand-alone or combine with another City Explorer for the perfect Asia experience.



Bespoke Accommodation

As well as our Ready to Book Private Itineraries and City Explorer packages, we offer an extensive range of accommodation options and experiences, so you can customise your Asia holiday.

Our hotels have been handpicked for comfort, location and to provide you with an insight into the region.

Where possible, we have selected properties with great local colour.

From city hotels and beachside resorts to traditional Ryokans and Minshukus, we have accommodation options to suit all tastes and budgets.

Create Your Own Insider Journey

We know one size does not always fit all. So why not take creative control and create your own insider journey!



Fushimi Inari Taisha Shrine, Kyoto

Our team of experts can help design a bespoke itinerary to suit your interests, timeframe and budget.

Use any of our Ready To Book Private Itineraries or City Explorer packages as inspiration or start from scratch with your own ideas.

We have a wide range of accommodation, sightseeing and transport options from which to choose and knowledgeable English-speaking local guides who will introduce you to their cities and towns in a way that only a local can do.

Whether its exploring ancient temples and shrines without the crowds, participating in a private tea ceremony, being entertained by a Geisha or unwinding at a stunning beach resort, Insider Journeys will connect you with the heart of Asia as only an insider can!



The Places We'll Take You

From its sheer beauty to the genuine warmth of its people, Asia has a wonderful way of getting under your skin. Let us introduce you to our favourite places in Japan.



Tokyo

Kanto Region

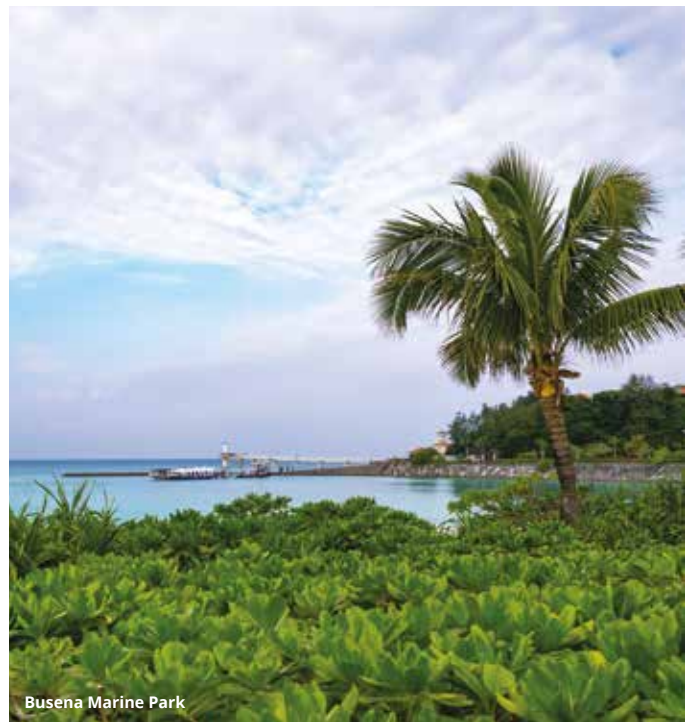
Discover the large metropolis of Tokyo, the hot springs of Hakone and the natural beauty surrounding sacred Mt Fuji, in the Kanto Region.



Kyoto

Kansai Region

As the cultural centre of Japan, the Kansai Region is home to the Geishas of Kyoto and the wonderful food scene of Osaka.



Busena Marine Park

Okinawa

Take a perfect beach break on Okinawa. Enjoy the warm climate, attractive beaches, great snorkelling and local cuisine.

Japan

Rich in natural beauty, enchanting culture and unique experiences, Japan is a land of contrasts. Discover the neon-lit streets of Tokyo and explore carefully preserved old-world villages. Be welcomed by the polite hospitality of the gracious locals and immerse yourself in this fascinating country.



Himeji Castle



Sakura Season

Intrinsically woven into the history and beliefs of the Japanese, each year the blooming of the Sakura (cherry blossom) is celebrated across the country. Spectacular displays of these romantic trees can be seen for a short time in spring.



Timeless Traditions

Japan is filled with culture and tradition. To get a taste, visit the many ancient shrines and temples, experience bathing in an onsen and stay in a Ryokan or Minshuku. Kyoto and Nara are the most historic and culturally rich places in the country.



Modern Cities

Japan's big cities are as modern as they come, with rising skyscrapers, flashing neon signs and the newest technology and automobiles. Get your big city thrills in Tokyo and Osaka – two of the most exciting and advanced cities in the world.

When To Go

Japan can be visited comfortably all year round. In winter (December to February), Honshu is quite cold, and it can snow in Western Honshu including Kyoto. Spring (March to May) and autumn (September to November) are temperate. Summer (June to August) is very humid. The cherry blossom season lasts a short time during spring, while autumn sees inland Japan ablaze in colour.

Average min/max temperature (°C)

	MAR-MAY	JUN-AUG	SEP-NOV	DEC-FEB
TOKYO	10°/18°	22°/28°	15°/22°	2°/10°
KYOTO	8°/19°	22°/31°	13°/23°	1°/10°
OSAKA	6°/19°	23°/31°	15°/23°	2°/10°
TAKAYAMA	2°/16°	17°/28°	8°/18°	-5°/4°
OKINAWA	19°/24°	26°/30°	22°/27°	14°/20°



Tokyo & Kyoto Discovery

7 DAY PRIVATE ITINERARY FROM \$2,785 PER PERSON*



Sensoji Temple, Tokyo

HIGHLIGHTS:

- Experience speeds of up to 320 kilometres per hour on the Shinkansen bullet train from Tokyo to Kyoto.
- Filled with shops, restaurants and ochaya (teahouses), wander the Gion district in Kyoto with a local guide for the evening.
- Visit Sensoji Temple, the oldest and most beloved temple in Tokyo, and be introduced to the influences of Buddhism and Shintoism on Japanese culture.



Kyoto



DAY 1 Tokyo

On arrival in Tokyo, meet your local representative and be transferred to your hotel. Enjoy free time exploring Tokyo. Stay the next three nights at Citadines Central Shinjuku Tokyo (or similar).

DAY 2 Tokyo

With your local English-speaking guide, discover Tokyo's highlights on a full day tour of the city. Explore Hama Rikyu Garden which dates back to 1654 and was once the private respite of the Tokugawa Shogun.

Cruise along Tokyo's Sumida River past the headquarters of some of Japan's most famous companies. Disembark near bustling Sensoji Temple to learn about the influences of Buddhism and Shintoism on Japanese culture. Enjoy city views from the observation deck of Tokyo Tower. (B)

DAY 3 Tokyo

Today is free for you to explore more of this exhilarating city at leisure. Make use of the fantastic underground railway network to discover neighbourhoods with manga-inspired street fashion, visit a traditional shrine and be sure to sample the local cuisine. (B)

DAY 4 Tokyo to Kyoto

Travel by Shinkansen bullet train to Kyoto and check-in to your hotel. In the evening explore Kyoto's famed Gion entertainment district with your local guide. Wander along the scenic streets where you may gain a glimpse of a Geisha on the way to an appointment. Stay the next three nights at Mitsui Garden Hotel Kyoto Shijo (or similar). (B)

DAY 5 Kyoto

Discover a sampling of Kyoto's treasures during a full day private tour. Explore Nijo Castle, built in 1603, and the glittering Golden Pavilion (Kinkaku-ji) which is one of Japan's most cherished sites. Visit World Heritage listed Kiyomizu-dera Temple, nestled into the forest-clad side of Higashiyama Hill, and the quaint Sannen-zaka and Ninen-zaka streets. (BL)

DAY 6 Kyoto

Enjoy a relaxing day exploring Kyoto at leisure. Discover more of the teahouses, the captivating Geisha culture or take a train through bamboo forests. (B)

DAY 7 Kyoto

Check-out of your hotel before being transferred to the airport. (B)

INCLUDES:

- 6 nights 3 star hotel accommodation
- Bullet train from Tokyo to Kyoto
- Transport in air-conditioned vehicles
- Tokyo full day tour
- Kyoto by Night Gion walking tour
- Kyoto full day tour
- Entrance fees
- Local English-speaking guide
- Return airport transfers to accommodation
- Meals as indicated (B = breakfast, L = lunch)



Akihabara, Tokyo

Japan Highlights

8 DAY PRIVATE ITINERARY FROM \$2,999 PER PERSON*



Kinkaku-ji, Kyoto



Shinkansen & Mt Fuji

HIGHLIGHTS:

- Sample traditional, local snacks and shop for souvenirs on Nakamise Shopping Street as you approach the popular Sensoji Temple.
- Take in the natural beauty of the Hakone countryside and, on a clear day, the near-perfect symmetry of Mt Fuji.
- Learn all about the world of the Geisha as you explore the Geisha districts of Kyoto including Hanami-koji Lane and Ponto-cho.



DAY 1 Tokyo

On arrival in Tokyo, meet your local representative and be transferred to your hotel. Enjoy a free afternoon exploring Tokyo. Stay the next three nights at Citadines Central Shinjuku Tokyo (or similar).

DAY 2 Tokyo

Spend the morning discovering the highlights of Tokyo with your local English-speaking guide. Take full advantage of the fantastic underground railway network and travel to serene Meiji Jingu shrine and Harajuku. Mingle with youngsters dressed in colourful cult fashions. Continue by train to Asakusa and explore Sensoji Temple and Nakamise Shopping Street. (BL)

DAY 3 Tokyo

Enjoy a free day exploring Tokyo. (B)

DAY 4 Tokyo to Hakone

Travel by Shinkansen bullet train to Hakone. Explore the region with your local English-speaking guide on transport including buses, mountain railways, cable cars and even a pirate ship across Lake Ashi. Choose to explore the national park on foot and head to one of the hiking trails which crisscross the area. Overnight at Hakone Yumoto Hotel (or similar). (BD)

DAY 5 Hakone to Kyoto

Venture to Kyoto on the Shinkansen bullet train. On arrival in Kyoto, check-in to your hotel. Spend time exploring Kyoto independently. Stay the next three nights at Mitsui Garden Hotel Kyoto Shijo (or similar). (B)

DAY 6 Kyoto

Discover Kyoto's highlights with your local English-speaking guide this morning. Visit the Nijo Castle, built in 1603, and the Golden Pavilion (Kinkaku-ji), one of Japan's most cherished sites. Spend the afternoon at leisure. (B)

DAY 7 Kyoto

Spend time exploring Kyoto independently today. This evening, discover Kyoto's famed Gion entertainment district on a walking tour. Walk through the most scenic streets of two different districts and learn about the world of the Geisha. If you're lucky, you might spot a Geisha on the way to an appointment. Highlights include Hanami-koji Lane (Geisha district), preserved houses, Shimbashi (the most scenic street in all Kyoto) and Ponto-cho (another scenic Geisha district). (B)

DAY 8 Kyoto

Enjoy free time until your onward journey. (B)

INCLUDES:

- 7 nights 3 to 3½ star hotel accommodation
- 7 Day JR Rail Pass
- Transport in air-conditioned vehicles
- Tokyo City Highlights half day tour
- Hakone full day tour
- Kyoto half day tour
- Kyoto by Night Gion walking tour
- Entrance fees
- Local English-speaking guide
- Airport transfers to Tokyo accommodation
- Meals as indicated (B = breakfast, L = lunch, D = dinner)



Gotokuji, Tokyo

West Japan Experience

11 DAY PRIVATE ITINERARY FROM \$3,515 PER PERSON*



HIGHLIGHTS:

- Take a food discovery tour of the Dotonbori area and sample the culinary delights Osaka is famous for.
- Stay in a Shukubo, a unique style of lodging in a Buddhist temple, and experience the daily life of monks and their religious rituals.
- Discover the treasures of Nara, including one of Japan's most historically significant temples, Todaiji Temple.

DAY 1 Osaka

On arrival in Osaka, be transferred to your hotel. Stay the next two nights at Hearton Hotel Nishiumeda (or similar).

DAY 2 Osaka

Uncover the culinary delights of Osaka on a full day food discovery tour. Enjoy sampling local dishes in the neon-lit Dotonbori area. (BL)

DAY 3 Osaka to Mt Koya

Travel by train, cable car and local bus to Mt Koya to your Shukubo (temple stay). The Shukubo offers basic yet clean lodgings, allowing you to really experience the temple, its lifestyle and Buddhism. Overnight at Koyasan Tentokuin Temple (or similar). (BD)

DAY 4 Mt Koya to Kyoto

Rise early to listen to the monks chanting – an enlightening experience. Following breakfast, travel by train to Kyoto. Enjoy a night walking tour of the famed Gion entertainment district. Stay the next four nights at Mitsui Garden Hotel Kyoto Shijo (or similar). (B)

DAY 5 Kyoto – Nara

Travel by train to Nara this morning, famous for its parkland, wild deer and temples. Visit Todaiji Temple, before continuing on to the World

Heritage listed eighth century Kasugataisha shrine, the most famous and beautiful Shinto shrine in Nara. Travel by train back to Kyoto where the afternoon is free. (B)

DAY 6 Kyoto

Today is free to uncover more of Kyoto. (B)

DAY 7 Kyoto

Visit the breathtaking mountain complex of Fushimi Inari on a half day tour today. (BL)

DAY 8 Kyoto to Hiroshima

Travel by train from Kyoto to Hiroshima. Stay the next two nights at New Hiroden (or similar). (B)

DAY 9 Hiroshima

Discover the highlights of Hiroshima on a half day tour. Visit the Peace Memorial Museum, see the Peace Memorial Park, a cenotaph honouring bomb victims, and the eerie A-Bomb Dome. (B)

DAY 10 Hiroshima to Osaka

From Hiroshima, travel by Shinkansen bullet train back to Osaka. Overnight at Hearton Hotel Nishiumeda (or similar). (B)

DAY 11 Osaka

Today, check-out of your hotel and be transferred to the airport. (B)

INCLUDES:

- 10 nights 3 star hotel accommodation
- 7 Day JR Rail Pass
- Transport in air-conditioned vehicles
- Private touring
- Entrance fees
- Local English-speaking guide
- Return airport transfers to accommodation
- Meals as indicated (B = breakfast, L = lunch, D = Dinner)



Ancient Japan & Snow Monkeys

12 DAY PRIVATE ITINERARY FROM \$3,575 PER PERSON*



HIGHLIGHTS:

- See the cute snow monkeys soaking in the hot springs of Yudanaka.
- Stroll past beautifully preserved wooden houses and enticing sake rice wine breweries on Kami Sannomachi Street in Takayama, also known as 'Little Kyoto'.
- Stay in a traditional Ryokan and enjoy an authentic Japanese dinner.



DAY 1 Tokyo

On arrival, meet your local representative and be transferred to your hotel. Stay the next two nights at Citadines Central Shinjuku Tokyo (or similar).

DAY 2 Tokyo

With your local guide this morning, discover Tokyo's highlights including Meiji Jingu shrine, Harajuku and Sensoji Temple. (BL)

DAY 3 Tokyo to Yudanaka

Travel by Shinkansen bullet train to Yudanaka, home to the snow monkey. During the winter months, the monkeys spend their days soaking in the area's famous hot springs. Stay the next two nights at Ryokan Biyu no Yado (or similar). (BD)

DAY 4 Yudanaka - Obuse

Spend time exploring Obuse independently. (B)

DAY 5 Yudanaka to Tsumago

Venture from Yudanaka to Tsumago by Shinkansen bullet train this morning. Choose to stop at JR Matsumoto to visit Matsumoto Castle. Spend the rest of the day at leisure. Overnight at Onyado Daikichi (or similar). (BD)

DAY 6 Tsumago to Takayama

Travel to Takayama by train. Take a walking tour of Takayama's main attractions, such as the Festival

Floats Exhibition Hall or Takayama Jinya. Stay the next two nights at Best Western Hotel Takayama (or similar). (B)

DAY 7 Takayama

Today is free for you to explore this unique town. (B)

DAY 8 Takayama to Kyoto

Continue your journey by Shinkansen bullet train to Kyoto. Kyoto is the setting of more than 1,000 temples and shrines, a headquarters for Geisha courtesans and the home of royal cuisine. Stay the next four nights at Mitsui Garden Hotel Kyoto Shijo (or similar). (B)

DAY 9 Kyoto

Spend the morning at leisure, then discover Kyoto's highlights on a walking tour in the afternoon. (B)

DAY 10 Kyoto

Travel by public transport to Fushimi with your guide. Visit a sake brewery and sample the famous brew before enjoying lunch in a traditional machiya, a wooden townhouse. (BL)

DAY 11 Kyoto

Today is free for you to explore beautiful Kyoto. (B)

DAY 12 Kyoto

Be transferred to the airport. (B)

INCLUDES:

- 11 nights 3 star hotel accommodation
- 7 Day JR Rail Pass
- Transport in air-conditioned vehicles
- Private and Join-In touring
- Entrance fees
- Local English-speaking guide
- Return airport transfers to accommodation
- Meals as indicated (B = breakfast, L = lunch, D = dinner)



Golden Route

14 DAY PRIVATE ITINERARY FROM \$6,245 PER PERSON*



Himeji Castle

HIGHLIGHTS:

- 📍 Visit Hiroshima's museums and memorials for an emotional journey into the city's war history.
- 📍 See the elegant, white Himeji Castle, widely considered Japan's most spectacular.
- 📍 Enjoy a traditional tea ceremony in Kyoto and learn the sophisticated philosophy behind serving a bowl of tea, a choreographed art that requires years of study to master.
- 📍 Explore Hakone's hiking trails through wonderful mountain and lake scenery, and enjoy a well-deserved soak in an hot spring onsen.
- 📍 Discover the pretty, rural village of Shirakawago, where the traditional farmhouses' steeply pitched roofs are said to resemble the praying hands of monks.





Peace Memorial Park, Hiroshima

DAY 1 Tokyo

On arrival in Tokyo, meet your local representative and be transferred to your hotel. Stay the next three nights at Citadines Central Shinjuku Tokyo (or similar).

DAY 2 Tokyo

Join your local English-speaking guide on a morning tour of Tokyo's highlights. (BL)

DAY 3 Tokyo

Spend the day at leisure. (B)

DAYS 4-5 Tokyo to Hakone

Journey by Shinkansen bullet train to Hakone, set in mountainous countryside. Explore its hiking trails, lakes and museums followed by a hot spring onsen bath. With the use of a Hakone Freepass, discover the area on up to eight different modes of transport. The pass also provides discount admission to various attractions. Stay two nights at Hakone Yumoto Hotel (or similar). (2B,2D)

DAY 6 Hakone to Takayama

Venture from Hakone to Takayama by train. Join a walking tour to discover some of Takayama's main attractions. Visit the Festival Floats Exhibition Hall, home to colourful floats which come out annually during one of Japan's most famous festivals. Visit Takayama Jinya, which offers wonderful insights into Japan's past. Stroll past some beautifully preserved wooden houses on Kami Sannomachi Street and venture past some enticing sake rice wine breweries. Stay the next three nights at Best Western Hotel Takayama (or similar). (B)

DAY 7 Takayama - Shirakawago

Explore the unique hamlet of Shirakawago. Hidden deep in the pine-covered mountains of Hakusan National Park, Shirakawago is filled with pretty farmhouses, barns and sheds with steeply pitched thatched roofs designed to withstand the heavy winter snowfall. (B)

DAY 8 Takayama

Enjoy a day at leisure and spend time making your own discoveries in Takayama. (B)

DAY 9 Takayama to Hiroshima

Travel to Hiroshima by train. Targeted by an atomic bomb, Hiroshima has become a thriving city since reinventing itself. Stay the next two nights at New Hiroden (or similar). (B)

DAY 10 Hiroshima

Discover Hiroshima's main sites on a full day tour. Visit the Peace Memorial Museum, see the Peace Memorial Park, a cenotaph honouring Hiroshima bomb victims, and the eerie A-Bomb Dome. Take the fast ferry to the tranquil island of Miyajima. Dine on local oysters and white wine before returning to Hiroshima. (B)

DAY 11 Hiroshima to Kyoto

Travel to Himeji Castle by train. The castle was built in the early 17th century and has kept its original design since construction. Continue onto Koko-en, a beautiful garden before travelling to Kyoto. Stay the next three nights at Mitsui Garden Hotel Kyoto Shijo (or similar). (B)

DAY 12 Kyoto

Spend the day with your local English-speaking guide and discover Kyoto's treasures. Explore the Nijo Castle, built in 1603, and the glittering Golden Pavilion (Kinkaku-ji) which is one of Japan's most cherished sites. Visit World Heritage listed Kiyomizu-dera Temple, and the quaint Sannen-zaka and Ninen-zaka streets. (B)

DAY 13 Kyoto - Nara

With your local guide, board the JR rapid train to and from Nara this morning. Visit the stunning Todaiji Temple, the Daibutsuden, Kofukuji Temple and spend some time in the peaceful park where over 1,000 tame deer roam freely. This afternoon, enjoy a traditional tea ceremony with a tea master. (B)

DAY 14 Kyoto

Enjoy free time until your onward journey. (B)

INCLUDES:

- 13 nights 3 to 3½ star hotel accommodation
- 14 Day JR Rail Pass
- Transport in air-conditioned vehicles
- Private and Join-in touring
- Entrance fees
- Local English-speaking guide
- Airport transfers to Tokyo accommodation
- Meals as indicated (B = breakfast, L = lunch, D = dinner)



Tea Ceremony



Meiji Jingu Shrine, Tokyo

Traditional Japan

16 DAY PRIVATE ITINERARY FROM \$6,685 PER PERSON*



HIGHLIGHTS:

- Visit Himeji Castle which was built in the early 17th century and has kept its original design since the time of construction.
- Stay in a Shukubo, a unique style of lodging in a Buddhist temple, and experience the daily life of monks and their religious rituals.
- Stroll along the pretty streets of Sannen-zaka and Ninen-zaka passing historic shophouses and teahouses.
- Visit the sumo area of Ryogoku to gain an insight into the world of sumo. See the athletes train and enjoy a chanko meal, just as the sumos do.
- Enjoy a day at leisure in Kurashiki. Wander the lovely canal area where canals are lined with willow trees and beautifully resorted storehouses, and visit the museums, boutiques and cafés.





Sannen-zaka, Kyoto

DAY 1 Tokyo

On arrival in Tokyo, meet your local representative and be transferred to your hotel. Stay three nights at Citadines Central Shinjuku Tokyo (or similar).

DAY 2 Tokyo

Explore Tokyo with your local guide on a half day city tour. (BL)

DAY 3 Tokyo

On a full day tour, travel by train to Ryogoku and visit a sumo stable to see these powerful athletes train up close. Delve into Tokyo's history and culture at the Edo-Tokyo Museum before enjoying a hearty sumo lunch. (BL)

DAY 4 Tokyo to Hakone

Travel by train from Tokyo to Hakone. With the Hakone Freepass, enjoy travelling on eight different modes of transport, allowing you to explore the area at your own pace. The pass also provides discount admission to various attractions. Overnight at Hakone Yumoto Hotel (or similar). (BD)

DAY 5 Hakone to Takayama

Venture by train from Hakone to Takayama and check-in to your hotel. Spend the rest of the day exploring Takayama at your own pace. Stay the next two nights at Best Western Hotel Takayama (or similar). (B)

DAY 6 Takayama

Today is free to explore Takayama at leisure. (B)

DAY 7 Takayama to Osaka

Continue south from Takayama to Osaka. Stay the next two nights at Mitsui Garden Hotel Osaka Yodoyabashi (or similar). (B)

DAY 8 Osaka

Discover Osaka's culinary delights on a full day food discovery tour. (BL)

DAY 9 Osaka to Mt Koya

Travel by train, cable car and local bus to Mt Koya and your Shukubo (temple stay).

Check-in to your basic yet clean lodgings. Relax and experience the temple, its lifestyle and Buddhism. Enjoy a tasty vegetarian dinner. Overnight at Koyasan Tentokuin Temple (or similar). (BD)

DAY 10 Mt Koya to Osaka

Rise early to listen to the monks chanting, an enlightening experience. Following breakfast, travel to Osaka. Overnight at Mitsui Garden Hotel Osaka Yodoyabashi (or similar). (B)

DAY 11 Osaka to Kurashiki

Meet your local English-speaking guide and travel by train to Himeji. Visit Himeji Castle which was built in the early 17th century and has kept its original design since the time of construction. Take a local bus and ropeway to Engyō-ji Temple. Continue to Kurashiki by train. Stay the next two nights at Ryokan Kurashiki (or similar). (BD)

DAY 12 Kurashiki

Enjoy a relaxing day exploring Kurashiki at your leisure. (BD)

DAY 13 Kurashiki to Kyoto

Venture by train from Kurashiki to Kyoto. Stay the next three nights at Mitsui Garden Hotel Kyoto Shijo (or similar). (B)

DAY 14 Kyoto

Discover Kyoto's treasures on a half day tour with your local English-speaking guide. (B)

DAY 15 Kyoto - Nara

Explore Nara, famous for its parkland, wild deer and temples. Visit stunning Todaiji Temple, made without the use of a single nail, and the home of a massive bronze Buddha. See the smaller yet equally beautiful eighth century Kasuga Shrine. Spend time mingling with Nara's free-roaming deer before returning to Kyoto. (B)

DAY 16 Kyoto

On your last day, enjoy free time until your onward journey. (B)

INCLUDES:

- 15 nights 3 to 3 ½ star hotel accommodation
- 14 Day JR Rail Pass
- Transport in air-conditioned vehicles
- Private and Join-in touring
- Entrance fees
- Local English-speaking guide
- Airport transfers from Tokyo airport to Tokyo accommodation
- Meals as indicated (B = breakfast, L = lunch, D = dinner)



Kurashiki



Tokyo

Tokyo

Tokyo's modernity is striking, yet its past lingers in the background, with tradition and ancient culture found in the unlikelyst of places. Be dazzled by the skyscrapers and neon lights of Tokyo's Ginza streets, Harajuku's hipster kids, and overlooking it all, eternal Mt Fuji.



Asakusa

The district of Asakusa is where Tokyo's past is truly evident. Enter through the imposing Thunder Gate to visit Tokyo's oldest temple, Sensoji and its Nakamise Shopping Street. Nearby, the Tokyo Skytree is a modern contrast.



Harajuku

Tokyo's hub of pop culture, Harajuku, is packed to the brim with trendy fashion and accessory stores, crêpe stands and hipster locals. You'll find many art galleries here, as well as one of the city's major shrines, Meiji Jingu.



Shinjuku

Around the busiest train station in the world lies Shinjuku. This district is home to towering skyscrapers, large department stores, underground malls and electronics retailers along with a huge entertainment district.

Tokyo City Explorer

4 DAYS FROM \$1,389 PER PERSON*

Behind Tokyo's futuristic façade lies a culture steeped in tradition. For the perfect introduction, choose our Tokyo City Explorer. Uncover the sights and sounds of this bustling city on a full day tour and visit a traditional sumo training centre to see this ancient sport in action.



Tokyo



Hama Rikyu Garden

DAY 1 Tokyo

On arrival in Tokyo, meet your local representative and be transferred to your hotel. Stay the next three nights at Hotel Villa Fontaine Shiodome.

DAY 2 Tokyo

Meet with your local English-speaking guide and embark on a full day tour of Tokyo to explore some of the city's highlights. Begin with a short walk to nearby Hama Rikyu Garden which dates back to 1654 and was once the private respite of the Tokugawa Shogun. After strolling through the tranquil garden, cruise on Tokyo's Sumida River. Pass the headquarters of some of Japan's most famous companies before finishing at the bustling Sensoji Temple, the oldest and most beloved temple in Tokyo, to discover the influences of Buddhism and Shintoism on

Japanese culture. Travel to Tokyo Tower and enjoy views from the observation deck. (B)

DAY 3 Tokyo

Meet your local English-speaking guide and travel by foot and train to Ryogoku, a district of Tokyo which is at the centre of the sumo world and home to a sumo stadium, sumo stables and chanko restaurants. Visit a sumo stable to see these powerful athletes train, and gain an in-depth understanding of the traditional world of sumo. Continue to the Edo-Tokyo Museum which showcases Tokyo's history and culture before enjoying a hearty sumo lunch. (BL)

DAY 4 Tokyo

After breakfast, be transferred to the airport. (B)

INCLUDES:

- 3 nights accommodation at Hotel Villa Fontaine Shiodome (Superior Double Room)
- Transport in air-conditioned vehicles
- Tokyo full day tour
- Sumo Training & Chanko Lunch full day tour
- Entrance fees
- Local English-speaking guide
- Return airport transfers to Tokyo accommodation
- Meals as indicated (B = breakfast, L = lunch)

UPGRADE your hotel or extend your stay to experience everything this beautiful city has to offer.
See pages 22 to 25 for other hotel options and experiences.



HOTEL VILLA FONTAINE SHIODOME



With a cutting edge style unparalleled in Japan, Hotel Villa Fontaine Shiodome provides a stylish atmosphere. The property is situated within easy walking distance of a number of train stations, ensuring that you can make the most of your time exploring Tokyo. Each room features a refined interior and comfortable queen sized beds with a range of amenities to ensure a pleasant stay. Stay active at the fitness centre or relax at the Lobby Lounge Bar, a comfortable space with sofas and natural wood interiors.

MAP REF. 1



TOKYO CITY EXPLORER – HOTEL UPGRADE OPTIONS



HOTEL TOBU LEVANT TOKYO

MAP
REF. 2

Hotel Tobu Levant Tokyo is situated in the middle of the bustling tourist area and 300 metres from a train station.

Each room is cosy and comfortably furnished with a range of amenities. Some rooms offer great city views.

Relax at the restaurant or lounge on the top floor with views of the Sky Tree and other Tokyo landmarks including Tokyo Tower and Rainbow Bridge.



SHINJUKU WASHINGTON

MAP
REF. 3

Located just a five minute walk to the vibrant shopping and dining district of Shinjuku and Shinjuku Station, this hotel is the perfect base to explore Tokyo. The hotel has a variety of room types that can accommodate single visitors as well as families and groups. All rooms are compact, well-furnished and offer modern conveniences. Facilities include a television, work desk, high-speed internet access, air-conditioning, refrigerator and hair dryer. Choose to dine in the variety of restaurants including that on the 25th floor which offers views of Shinjuku's skyline.



CITADINES CENTRAL SHINJUKU TOKYO

MAP
REF. 4

Located within walking distance of the Shinjuku East area, Citadines Central Shinjuku Tokyo is a contemporary property with a prime location close to the Marunouchi and Toei Shinjuku subway lines. This property combines the convenience of a hotel with the freedom and privacy of a serviced apartment. Each room features contemporary furniture with a range of modern amenities to ensure a comfortable stay. Bilingual staff are available 24 hours a day to assist you during your stay.

from **\$1,525*** per person for 4 Day Tokyo City Explorer (Casual Twin Room)

from **\$1,535*** per person for 4 Day Tokyo City Explorer (Twin Room)

from **\$1,589*** per person for 4 Day Tokyo City Explorer (Studio Twin Room)



HOTEL GRACERY SHINJUKU

MAP
REF. 5

Hotel Gracery Shinjuku is a modern high-rise hotel fronted by a quirky Godzilla statue located just a short walk from Shinjuku train station. Tokyo's vibrant bar district, Golden Gai is a five minute walk from the property.

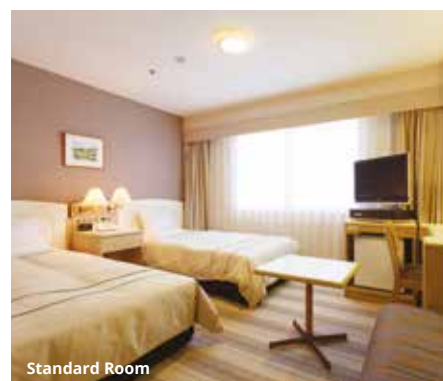
Each bright, compact room features a flat screen television and complimentary wireless internet. Choose to dine at the Italian restaurant or relax at the coffee shop which features a terrace.



MERCURE TOKYO GINZA

MAP
REF. 6

Located in the heart of Tokyo's shopping area, Mercure Tokyo Ginza is within walking distance from Ginza dori and Harumi dori shopping streets, Kabuki Theatre and Tsukiji Fish Market. The subway station under the hotel provides easy access to all of Tokyo's sights and attractions. Each room is tastefully designed with French flair. Functional and vibrant, rooms feature comfortable bedding, soundproof windows, bathtub and complementary wireless internet. Dine on French cuisine at the restaurant and relax with a drink from the extensive menu at the bar.



AKASAKA EXCEL HOTEL TOKYU

MAP
REF. 7

Centrally located in Tokyo, Akasaka Excel Hotel Tokyu is situated across from Akasaka Mitsuke train station. This exciting area of Tokyo is home to high-end restaurants, bars and entertainment.

Each room is simple and comfortable while being modern and functional, making this hotel an ideal choice for a relaxing stay in the city. Enjoy dining at the restaurants with a range of cuisines, relax in the lounge or enjoy a drink at the bar.

from **\$1,639*** per person for 4 Day Tokyo City Explorer (Superior Comfort Double Room)

from **\$1,639*** per person for 4 Day Tokyo City Explorer (Standard Room)

from **\$1,719*** per person for 4 Day Tokyo City Explorer (Standard Room)

TOKYO CITY EXPLORER – HOTEL UPGRADE OPTIONS



Twin Room

SHINAGAWA PRINCE HOTEL

MAP
REF.
8

The Shinagawa Prince Hotel, which is in front of Shinagawa Station, has good access to Narita Airport, Haneda Airport, Tokyo Big Site and the Tokyo Forum.

Rooms are smart, chic and very comfortable. Not just a place to stay, but a place to play, the hotel features movie theatres, bowling alleys, the Aqua Park Shinagawa, tennis, golf, swimming pools and other entertainment facilities.



Standard Room

COURTYARD BY MARRIOTT
TOKYO GINZAMAP
REF.
9

Located in the Ginza District on Tokyo's premier Showa-Dori Avenue, the Courtyard by Marriott Tokyo Ginza is surrounded by shopping, commercial, sightseeing and cultural attractions. Each room is quiet and comfortable with a range of amenities to ensure a relaxing stay. Choose to dine at the hotel's restaurants with a choice of international or Japanese cuisine. After a day of sightseeing, relax in the lobby lounge with a drink.



KEIO PLAZA HOTEL TOKYO

MAP
REF.
10

With a central location just minutes from bustling Shinjuku train station, Keio Plaza Hotel Tokyo is a contemporary property. Easily accessible by train, spend time exploring the city.

The hotel features comfortable, stylish rooms which are considered large by Tokyo standards. Enjoy the rooftop pool and fully-equipped gym. A highlight is the property's excellent service, and some English is spoken by the welcoming staff.

from **\$1,779*** per person for 4 Day Tokyo City Explorer (Main Tower Room)

from **\$1,809*** per person for 4 Day Tokyo City Explorer (Standard Room)

from **\$1,859*** per person for 4 Day Tokyo City Explorer (Standard Room)

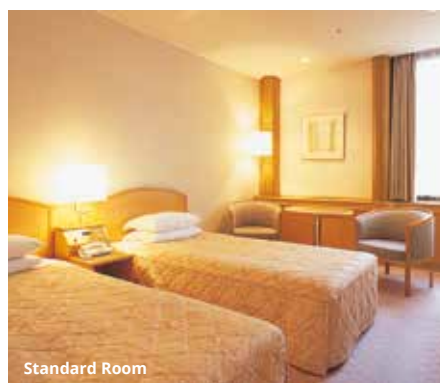


Standard Room

SHIBUYA EXCEL HOTEL TOKYU

MAP
REF.
11

Known for its vibrant and energetic location, Shibuya Excel Hotel Tokyu is situated above the fashionable Mark City shopping mall and is surrounded by countless malls, restaurants and bars. With refined style, each simple room is modern and offers complimentary in-room internet access. The property aims to focus on the individual needs of its guests to ensure a comfortable stay. Enjoy dining at the Japanese or French restaurant with excellent views of the city from the 25th floor.



Standard Room

SHIBA PARK HOTEL

MAP
REF.
12

Just one block from Tokyo Tower and within a short walk of three train stations, Shiba Park Hotel is conveniently located and well-served by an airport bus transfer service. Each bright room is decorated in neutral tones, creating a contemporary and pleasant ambience. Many of the staff speak reasonable English, with a helpful concierge service making it easy for you to find your way around town. Dine at the Michelin-starred French restaurant or at the traditional Japanese restaurant. Relax with a drink at the martini bar.



Park Room

PARK HYATT TOKYO

MAP
REF.
13

This chic hotel is situated at the top of a skyscraper with sublime views overlooking Tokyo.

Spacious rooms feature a range of plush comforts and are 45 square metres or larger with a walk-in wardrobe and deep bathtub.

Experience the luxurious spa and sleek indoor pool, and enjoy the range of decadent dining options. Relax with a drink in the sophisticated bar, featured in the film 'Lost in Translation'.

from **\$1,945*** per person for 4 Day Tokyo City Explorer (Standard Room)

from **\$2,099*** per person for 4 Day Tokyo City Explorer (Standard Room)

from **\$2,559*** per person for 4 Day Tokyo City Explorer (Park Room)

TOKYO EXPERIENCES



Tokyo Disneyland® or Tokyo DisneySea® Passport Full Day / Join-in

Experience the magic of Tokyo Disneyland® or Tokyo DisneySea® with a single day entry to one park of your choice. Located right outside Tokyo in Urayasu-city, Chiba prefecture, there are seven themed areas at Tokyo Disneyland® as well as seasonal parades and events. Tokyo DisneySea® is inspired by myths and legends of the sea with seven themed ports of call for you to explore.

Note: Multi-day passes also available with entry into both parks for 2, 3 or 4 days with unlimited rides, ask your Agent for details.

from **\$116*** per person
Minimum 2 people



Tokyo Grand Tour Full Day / Join-in

There's much to see in bustling Tokyo and this full day tour is the perfect introduction to the city's sights. Visit Tokyo Tower and enjoy a panoramic view of Tokyo from the main observation platform. Head for Meiji Shrine, Japan's most famous Shinto shrine, dedicated to the Emperor Meiji and his consort. Driving past the Japanese Capitol (House of Parliament), visit the Imperial Palace East Garden and stroll around the impressive Japanese garden, moats and stone walls that were once the grounds of an old Edo castle. After driving through Ginza district, you will have a Japanese-style lunch.

from **\$146*** per person
Minimum 2 people



Tokyo After 5 Evening / Join-in

Join a local guide on this Tokyo tour to experience the capital's busy, but friendly and compact charms by night. Make like a local and savour legendary, iconic Tokyo flavours and dishes. Devour yakitori (skewered barbecued chicken) at a street yakitori bar. Enjoy Monja-yaki in the neighbourhood where it originated – Monja Town (Tsukishima). Visit a confectionery shop and learn about wagashi, a traditional Japanese sweet that changes with the season. Experience the clash of decades in the nostalgic atmosphere of modern, downtown Tokyo.

This tour is also available as a Private Tour, ask your Agent for details.

from **\$155*** per person
Minimum 2 people



Mt Fuji & Hakone Tour Full Day / Join-in

As you travel up to Mt Fuji's fifth station at over 2,000 metres, you'll be inspired by the beauty of the Japanese landscape. Mt Fuji is Japan's highest mountain. There's ample free time to enjoy the crisp mountain air at leisure. In the afternoon, ride the Hakone Ropeway cable car, take a cruise on Lake Ashi and return to Tokyo by bullet train with your JR pass. The tour finishes at Tokyo station.

Note: Tour will include a visit to the Fuji visitor centre or other alternative activity if Mt Fuji fifth station is closed due to snow.

from **\$186*** per person
Minimum 2 people



Nikko Tour Full Day / Join-in

Travel to the scenic Nikko area by bus for the day. Enjoy exploring the lavish Nikko Toshogu Shrine in the morning. The complex houses more than a dozen buildings set in a beautiful forest. After a Japanese style-lunch, visit Lake Chuzenji and Kegon Falls, a beautifully scenic area in the mountains above the town of Nikko.

Note: Tour will not visit Kegon Falls or Lake Chuzenji mid-October to mid-November, when the tour will visit either the Rinnoji Temple, Taiyu-in Mausoleum, Nikko Futarasan Shrine, the Kirifuri Falls or Nikko Tamozawa Imperial Villa.

from **\$224*** per person
Minimum 2 people



Tokyo City Highlights Tour Half Day / Private

Explore the city's highlights on a carefully created tour. Taking full advantage of the fantastic underground railway network, you will travel to serene Meiji Jingu shrine and Harajuku. Here, mingle with youngsters dressed to the hilt in colourful cult fashions. Continue by train to Asakusa and explore Sensoji Temple and Nakamise Shopping Street. Towards the end of the tour, your guide can assist with local restaurant recommendations, help you order and explain the menu before departing for the day.

This tour is also available as a Full Day Tour, ask your Agent for details.

from **\$282*** per person
Minimum 2 people

TOKYO EXPERIENCES



Tsukiji Outer Fish Markets & Sushi Breakfast

Half Day / Private

Discover the chaos of the world's largest fish market, Tsukiji. With your local English-speaking guide, travel by JR train or subway to the outer markets. Enjoy a set course sushi breakfast and the local sushi bar. Immerse yourself in the activity of the buzzing market and you walk around this amazing place. You'll also see Namiyoke Shrine, a small shrine featuring male and female lion statues believed to keep the weather and waves calm. Around midday, return to your hotel or continue exploring independently.

Note: Tsukiji Fish Market is closed on Sundays and selected Wednesdays.

from **\$298*** per person
Minimum 2 people



Tokyo Pop Culture & Anime Tour

Full Day / Private

Take in some of Tokyo's must-see manga and anime sights. Explore Akihabara, a centre of Japan's otaku (diehard fan) culture and many shops devoted to anime and manga. Depart by train to Harajuku to immerse yourself in the teenage culture and visit the many trendy shops, used clothes stores and crêpe stands. If you visit Harajuku on a Sunday, many young people gather around Harajuku Station and engage in cosplay (costume play), dressed up in eccentric costumes to resemble anime characters and punk musicians. Afterwards, visit the Ghibli Museum.

Note: Cosplay people are not guaranteed. Ghibli Museum is closed on Tuesdays, and seasonally.

from **\$384*** per person
Minimum 2 people



Sumo Training & Chanko Lunch

Full Day / Private

With your local English-speaking guide, travel by foot and train to Ryogoku, a district of Tokyo where the sumo stadium, many sumo stables, chanko restaurants and other sumo-related attractions can be found. It is the centre of the sumo world. Here you will visit a sumo stable to watch these powerful athletes train up close, and gain an in-depth understanding of the traditional world of sumo. Afterwards, visit the Edo-Tokyo Museum before enjoying a hearty sumo lunch. Chanko-nabe is a hearty dish that is relatively healthy, low in fat, high in protein and filled with a little of everything: salmon, chicken, enoki, fried tofu, prawns, scallops, vegetables and meatballs.

from **\$415*** per person
Minimum 2 people



Hidden Kamakura

Full Day / Private

Explore the best of Kamakura, a seaside city just an hour drive from Tokyo. Spend ample time at Hokoku-ji Temple set in the secluded hills. This small temple houses a statue of Buddha and has a unique bell tower, but it's best known for its bamboo forest with little paths winding through it. Uncover Kotoku-in Temple and its large bronze statue of the Great Buddha of Kamakura. Explore Jomyo-ji Temple and sip on Japan's famous powdered matcha green tea in the tranquil atmosphere of its tearoom. Also included is a delicious Japanese-style lunch.

from **\$423*** per person
Minimum 2 people



Tokyo Traditional Arts Tour

Full Day / Private

Walk the short distance to the nearest train station with your guide. Travel to Shunka-en, a bonsai museum of Kunio Kobayash. Afterwards, travel back to central Tokyo and enjoy a traditional tea ceremony to learn the sophisticated philosophy behind serving a bowl of tea. As the instructor or guide explains the history of tea and shows you the utensils used in the ceremony, your guide will translate any questions that you may have. Enjoy this quintessential part of Japanese culture that has been described as a formal social gathering, a meditative practise and a performance art. In the afternoon, enjoy a calligraphy class.

from **\$588*** per person
Minimum 2 people



Tokyo Gourmet Tour

Full Day / Private

Discover the very best culinary experiences that Tokyo has to offer. Travel by train to Tsukiji, the largest fish market in the world. Explore the outer market for all sorts of food-related goods, knives and fresh seafood. You'll also see Namiyoke Inari Shrine and enjoy a fresh sushi breakfast. Venture to Kappabashi Dougu Street where you can find almost every kind of restaurant equipment imaginable, followed by a tempura or soba noodle lunch. Enjoy a guided walking tour of the Nihonbashi area in central Tokyo. In the evening, enjoy dinner at a Japanese Wagyu beef barbecue restaurant.

Note: Tsukiji Fish Market is closed on Sundays and selected Wednesdays.

from **\$674*** per person
Minimum 2 people

Hakone

Iconic Mt Fuji, known locally as Fuji-san, lies less than 100 kilometres from Tokyo and on a clear day can be seen from parts of the city. Nearby Hakone is best known for its views of the mountain, when it's not cloaked in clouds, as well as the surrounding natural beauty and hot springs.



Lake Ashi

The symbol of Hakone, the very scenic Lake Ashi was formed by the volcanic eruption of Mt Hakone. Take a cruise on a pirate ship, see the huge, red torii gates of Hakone Shrine and, on a clear day, see impressive views of Mt Fuji.



Owakudani

Owakudani is a volcanic valley of hot rivers and springs. Gas and steam billowing up from sulphur vents creates dramatic scenery. Take the short walking trail and try the black eggs boiled in the hot springs – they're said to prolong life.



Hakone Open Air Museum

The world class Hakone Open Air Museum displays some of the world's best modern sculpture. A great connection between nature and art, over one hundred large-scale pieces are scattered across beautiful garden settings.

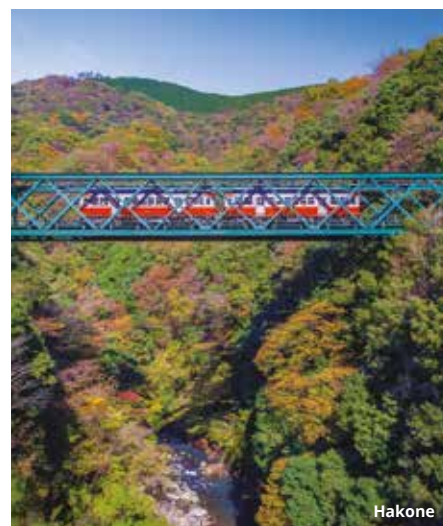
Hakone & Mt Fuji Cultural Escape

5 DAYS FROM \$1,899 PER PERSON*

Hakone is blessed with natural beauty including the nearby Mt Fuji. For the perfect introduction, choose our Hakone & Mt Fuji Cultural Escape. Discover all that Hakone has to offer, combined with the highlights of Tokyo and an introduction to the world of sumo.



Chureito Pagoda



Hakone

DAY 1 Tokyo

On arrival in Tokyo, meet your local representative and be transferred to your hotel. Stay the next two nights at Hotel Tobu Levant Tokyo.

DAY 2 Tokyo

Meet your local English-speaking guide and embark on a half day tour of the city. Take a short walk to nearby Hama Rikyu Garden. Board a boat to cruise on the Sumida River before arriving at Sensoji Temple. Travel to Tokyo Tower and enjoy city views from the observation deck. (B)

DAY 3 Tokyo to Hakone

Walk and travel by train with your local English-speaking guide to Ryogoku, a district of Tokyo which is at the centre of the sumo world. Visit a sumo stable to see these powerful athletes train

up close and gain an in-depth understanding of the traditional world of sumo. Visit the Edo-Tokyo Museum to learn about Tokyo's history and culture before enjoying a hearty sumo lunch. After lunch, make your own way to the train station for your journey to Hakone. Stay the next two nights at Hakone Pax Yoshino. (BLD)

DAY 4 Hakone

Explore Hakone on a full day tour using the Hakone Freepass. Discover Mt Fuji from many different angles, presenting a multitude of opportunities for photography and to learn about this revered mountain. Travel by train, bus, boat and cable car during a fun day in Japan's lovely countryside. (BD)

DAY 5 Hakone

Enjoy free time until your onward journey. (B)

INCLUDES:

- 2 nights Tokyo hotel accommodation at Hotel Tobu Levant Tokyo (Standard Room)
- 2 nights Hakone hotel accommodation at Hakone Pax Yoshino (Standard Japanese Room)
- Transport in air-conditioned vehicles
- Tokyo half day tour
- Sumo Training & Chanko Lunch full day tour
- Hakone full day tour • Entrance fees
- Local English-speaking guide
- Airport transfer from Tokyo airport to Tokyo accommodation
- Meals as indicated (B = breakfast, L = lunch, D = dinner)

UPGRADE your hotel in Hakone.

See pages 28 and 29 for other hotel options and experiences. Ask for prices to upgrade your hotel in Tokyo.



Japanese Room

HAKONE PAX YOSHINO



Hakone Pax Yoshino is set on the banks of Sukumogawa River and located a 12 minute walk from Hakone Yumoto Station, the gateway to sightseeing in Hakone. Stay in authentic Japanese rooms which boast views of mountain foliage that change throughout the seasons. Rooms feature traditional design including tatami mats and shoji screens. Soak in the gentle hot spring, located in an open-air environment with views of the mountains and river. Enjoy the traditional Japanese banquet comprised of fresh fish from the Pacific Ocean and vegetables from the west face of Hakone Mountain.

MAP
REF.
1



HAKONE & MT FUJI CULTURAL ESCAPE – HOTEL UPGRADE OPTIONS



MOTOYU KANSUIRO

MAP
REF. 2

Dating back to 1614, this four-storey traditional Japanese inn is situated alongside a mountain stream. Each Japanese-style guestroom is built from precious woods gathered from throughout Japan and features an open-air bath. The traditional rooms feature futon mat bedding which will be prepared and put away for you daily. Immerse yourself in the tradition and charm of this Ryokan that has been loved by many, from artists to politicians. Enjoy seasonal Japanese cuisine served in your room, relax in the hillside open-air baths and take in the beautiful scenery of the Hayakawa River and Mt Hakone.

from **\$1,995*** per person for 5 Day Hakone & Mt Fuji Cultural Escape (Japanese Station Room)



Standard Japanese Room

KAJIKASO RYOKAN

MAP
REF. 3

For a superb relaxing stay with warm hospitality, the traditional Kajikaso Ryokan is a great choice. The landscape surrounding the hotel dramatically changes with each season and can be enjoyed from the privacy of your room. All rooms are Japanese-style with tatami mat flooring, slippers, Yukata (Kimono-like robe) and futon bedding. Enjoy exceptional Japanese cuisine in your room or in the restaurant. The hotel offers a wide range of onsen hot spring facilities including an open-air bathing area, a rock-lined bathing area, and a large bathing spa with wooden bathtubs made of Hinoki (Japanese cypress).

from **\$2,069*** per person for 5 Day Hakone & Mt Fuji Cultural Escape (Japanese Standard)



Garden View Room

THE PRINCE HAKONE LAKE ASHINOKO

MAP
REF. 4

The Prince Hakone Lake Ashinoko is a wonderful resort hotel surrounded by Lake Ashi and mountain ranges. A variety of room types with views of Mt Fuji, the lake or the woodlands are on offer. All rooms are spacious and elegantly furnished. Enjoy all modern conveniences including complimentary wireless internet, LCD television and hair dryer. Enjoy time full of beauty, relaxation and healing at the Kaede Spa or at the hot spring with the lovely scenery of Lake Ashi. A selection of dining experiences are available including French and Japanese restaurants and a casual café lounge.

from **\$2,245*** per person for 5 Day Hakone & Mt Fuji Cultural Escape (Garden View Twin)



Guest Room

HYATT REGENCY HAKONE RESORT & SPA

MAP
REF. 5

Hyatt Regency Hakone Resort & Spa is a convenient base from which to explore Hakone. The hotel feels like a mountain lodge mountain with the contemporary sophistication of a world-class hotel. Each spacious guestroom and suite features a private sun terrace or balcony. Inside, you'll find modern, elegant design with Japanese touches. Rooms also feature modern amenities including flat-screen televisions, DVD players and high-speed internet. Set in the Fuji-Hakone-Izu National Park, the resort invites relaxation with serene spaces and plenty of nature. Rejuvenate at the day spa and onsen and enjoy great dining experiences at the hotel's restaurants.

from **\$2,549*** per person for 5 Day Hakone & Mt Fuji Cultural Escape (Guest Room)



Japanese Room

HAKONE YUMOTO HOTEL

MAP
REF. 6

Explore the charms of Hakone from this traditional Japanese property located among leafy forests. The rooms feature tatami mat flooring, futon bedding and basic Western showers and toilets. Dine on traditional Japanese cuisine while sitting on the tatami mat-floored dining room.

After a day of sightseeing, soak in a variety of Japanese baths, ranging from indoor pools to serene outdoor hot springs. Enjoy a traditional Ryokan experience and gain valuable insights into Japanese culture.

from **\$2,949*** per person for 5 Day Hakone & Mt Fuji Cultural Escape (Standard Japanese)



Standard Room

GORA KADAN

MAP
REF. 7

Set in the picturesque mountainous region of Hakone, this stunning property is only a five minute walk from Gora Station. Each room reflects a traditional Japanese Ryokan with tatami mats, a sitting area and Western-Japanese-style bathroom. All rooms feature complimentary wireless internet, flat-screen television and hair dryer. Relax in the heated pool and hot spring bath, or make use of the gym area. The traditional elegance and stately atmosphere of the mansion greatly enhances the dining experience at the restaurant.

from **\$3,129*** per person for 5 Day Hakone & Mt Fuji Cultural Escape (Standard Japanese)

HAKONE EXPERIENCES

**Hakone Freepass****2 Days / Join-in**

Famous for its hot springs (onsen) and filled with pristine nature, Hakone has so many attractions, you'll want to stay a few days. Travelling on a Hakone Freepass saves you money and hassles, by including unlimited travel within the Hakone area, it gives you the opportunity to get on and off as you like.

Choose from eight types of transport, including the Hakone Tozan Line and the Hakone Ropeway (seasonal). On top of all your transportation around the area, the pass offers discounts at over 50 attractions. Enjoy discounts at seven hot springs and spas, 19 art galleries and museums including The Hakone Open-Air Museum and Hakone Art Museum, as well as parks and gardens, amusement and sports facilities and some fantastic shopping and dining options.

Note: Price based on 2 Day Hakone Freepass. Contact us for three day prices.

from **\$76*** per person
Minimum 2 people

**Hakone Tour****Full Day / Private**

Set in mountainous countryside, the Hakone region boasts great natural beauty and on a clear day the near-perfect symmetry of Mt Fuji provides the perfect backdrop.

In conjunction with your local English-speaking guide, choose what you want to do. Your Hakone Freepass covers public transport in the region including buses, mountain railways, cable cars and even a pirate ship ride across Lake Ashi. Explore the national park on foot on one of the many hiking trails and try a magic black egg boiled in the bubbling hot rivers of Owakudani, they're said to add seven years to your life for each one consumed. Hakone is also home to several excellent museums including the open-air sculpture park which boasts a sizeable Picasso collection among other treasures. At the end of a busy day's sightseeing, take the time to relax in one of the many hot spring onsen baths for which Hakone is renowned.

from **\$440*** per person
Minimum 2 people

**Mt Fuji Climb****2 Days / Private****DAY 1 Base to Eighth Station**

Throughout July and August, thousands of people make the pilgrimage to the top of Mt Fuji.

Early this morning, make your way independently to the Shinjuku bus terminal in Tokyo and take the highway express bus to Mt Fuji area. Included climb equipment and clothing can be hired before meeting your English-speaking climbing guide. Transfer with your guide by local train and shuttle to the fifth station of Mt Fuji by early afternoon.

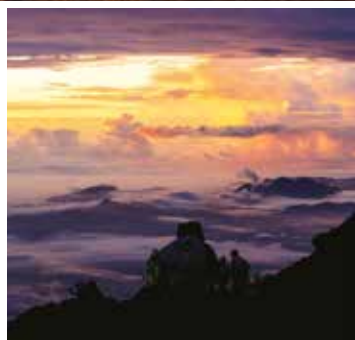
Begin the long climb up the mountain through a rocky, moon-like landscape. The climb can be strenuous and the air gets notably thinner as you gain altitude, but the sense of achievement when you reach the summit is unforgettable. Climb to the eighth station today, before a short rest at the lodge until midnight. The mountain lodge accommodation consists of a mixed men's and women's room with bunk beds, and less than one mat of space per person. There are no bathing facilities at the lodge, and non-flushing Japanese-style toilets are available outside. **(D)**

DAY 2 Eighth Station to Mt Fuji Peak to Base

At midnight, start the climb to the top of Mt Fuji. On arrival to the peak, enjoy a beautiful and very rewarding sunrise. Climb down to the fifth station before travelling back to return the climbing equipment and your onward journey by express bus. **(B)**

Note: Meals as indicated (B = breakfast, D = dinner).

from **\$1,096*** per person
Minimum 2 people



Kyoto

Kyoto is the cultural capital of Japan and is a timeless, living repository of this ancient and exotic culture. See Geishas disappear through teahouse doorways, fall in love with colourful kimonos, and discover temples, shrines and beautiful gardens.



Temples & Shrines

Discover Kyoto's best Zen shrines and ancient temples. Kyoto has around 2,000 of them, from the Golden Pavilion (Kinkaku-ji) and the impressive Fushimi-Inari-Taisha Shrine, to the calming Zen garden of Ryoan-ji Temple.



Old Streetscapes

Uncover the Kyoto of the past as you stroll the pretty streets of Sannen-zaka and Ninen-zaka. These charming, gently sloping streets are lined with restored shophouses and teahouses and will lead you to Kiyomizudera Temple.



Kyoto National Museum

Founded in 1897, Kyoto National Museum is a treasure trove of artefacts and traditional Japanese art. The museum is one of the country's oldest and most distinguished and showcases sculpture, costume, paintings and more.

Kyoto City Explorer

4 DAYS FROM \$1,319 PER PERSON*

Kyoto is one of the best places in the country to discover traditional Japan. For the perfect introduction, choose our Kyoto City Explorer. Uncover the city's cherished temples and shrines on a guided tour, sample sake at a working brewery and wander through the Geisha district.



Fushimi Shrine



Sannen-zaka

DAY 1 Kyoto

On arrival at Kansai Airport, meet your local representative and be transferred to your hotel. Stay the next three nights at Karasuma Kyoto Hotel.

DAY 2 Kyoto City Tour

Discover a sampling of treasures in Kyoto on a full day private tour with your local English-speaking guide. Visit the Nijo Castle, built in 1603, and the glittering Golden Pavilion (Kinkaku-ji) which is one of Japan's most cherished sites. Explore the World Heritage listed Kiyomizu-dera Temple, and the quaint Sannen-zaka and Ninen-zaka streets. (B)

DAY 3 Kyoto

Meet your local English-speaking guide and travel by public transport to Fushimi for the

morning. Walk through the thousands of coloured 'torii' (a traditional Japanese gate), to the many sub-shrines and mountain lookout. Visit a sake brewery and sample the famous brew before enjoying lunch in a traditional machiya, a wooden townhouse developed in Kyoto. Enjoy an afternoon exploring Kyoto at your own pace.

In the evening, explore Kyoto's famed Gion entertainment district. With your local guide, walk through the scenic streets of two different Geisha districts where you may spot a Geisha on the way to an appointment. (BL)

DAY 4 Kyoto

Enjoy free time until your onward journey. (B)

INCLUDES:

- 3 nights hotel accommodation at Karasuma Kyoto Hotel (Standard Twin Room)
- Transport in air-conditioned vehicles
- Kyoto full day tour
- Kyoto Fushimi Inari & Sake Tasting half day tour
- Kyoto by Night Gion Walking evening tour • Entrance fees
- Local English-speaking guide
- Airport transfer from Kyoto airport to Kyoto accommodation
- Meals as indicated (B = breakfast, L = lunch)

UPGRADE your hotel or extend your stay to experience everything this beautiful city has to offer.
See pages 32 to 35 for other hotel options and experiences.



KARASUMA KYOTO HOTEL

Karasuma Kyoto Hotel is situated right in the heart of Kyoto's shopping, dining and entertainment districts. Just a short drive to Kyoto Imperial Palace and Nijo Castle, this hotel is the perfect base to explore the local landmarks. This modern hotel features rooms which are well-equipped and comfortable. Dine at Toh-Lee Chinese, one of the hotel's two restaurants or relax with a drink at the bar. There are also many traditional restaurants within walking distance from the hotel.

MAP
REF.
1



KYOTO CITY EXPLORER – HOTEL UPGRADE OPTIONS



MATSUBAYA RYOKAN



MAP
REF.
2

Located near Higashi Honganji Temple, this traditional Japanese inn was built in 1884 and has been owned by the same family for over 100 years. Though modern, it offers a great Japanese experience. The Japanese-style rooms feature tatami mat flooring with a Western shower and toilet. Ground floor rooms overlook the beautiful Japanese garden. This Ryokan is situated a short drive from the JR Kyoto train station, making it the perfect location to explore the atmospheric streets of Kyoto.



MITSUI GARDEN HOTEL KYOTO SHJO



MAP
REF.
3

This hotel offers a convenient location next to Karasuma Oike train station and the shops of Shijo Street. From its ground floor gardens to Japanese-style baths, the property features a range of Japanese touches.

Each comfortable room features a Western design, with wide beds and a compact bathroom, while the common areas incorporate local touches including traditional paper screens. The rustic restaurant serves delicious local cuisine.



CITADINES KARASUMA-GOJO KYOTO



MAP
REF.
4

Citadines Karasuma-Gojo Kyoto is centrally located in Gojo, just steps away from the Gojo subway station and one stop from the main Kyoto station. It is a short stroll away from the business district as well as Kyoto's dining and entertainment district, where guests have an array of restaurants and bars to choose from. This 124 room hotel features modern guestrooms with a well-equipped kitchenette including a microwave.

from **\$1,405*** per person for 4 Day Kyoto City Explorer (Standard Japanese Room)

from **\$1,405*** per person for 4 Day Kyoto City Explorer (Standard Twin Room)

from **\$1,435*** per person for 4 Day Kyoto City Explorer (Studio Room)



KYOTO CENTURY HOTEL



MAP
REF.
5

With a stay at Kyoto Century Hotel, you'll be centrally located in Kyoto, just a three minute walk from Kyoto Tower and eight minutes from Higashi Honganji Temple. Make yourself at home in one of the 218 air-conditioned rooms featuring refrigerators and LED televisions. Complimentary wireless internet is available to keep you connected. Private bathrooms with showers and bidets feature complimentary toiletries. Enjoy a satisfying meal at La Jyho and make use of hotel services including laundry services, multilingual staff and luggage storage.



Standard Room

NEW MIYAKO HOTEL



MAP
REF.
6

Located right in front of Kyoto Station, New Miyako Hotel is only a five minute walk from the Bullet Train platform which provides direct access to Tokyo and Osaka. Sightseeing attractions such as Kiyomizu-dera Temple and the Fushimi Inari Shrine are all nearby. Each hotel room has modern and stylish décor and contemporary facilities giving a feel of convenience and comfort. The hotel provides an array of dining options, including a stylish dining café and bar, a buffet-style restaurant, an authentic Chinese restaurant and a Japanese restaurant using select ingredients.



Standard Room

ROYAL PARK HOTEL THE KYOTO



MAP
REF.
7

Located in the centre of Kyoto, Royal Park Hotel The Kyoto is just a short walk from Ponto-cho, the entertainment district of Gion and a train station. This modern hotel features rooms which are large by Japanese standards. With a classic feel, the rooms are well-equipped and comfortable. Enjoy healthy Japanese and Western cuisine in the stylish restaurant or relax with a drink at the sleek bar after exploring Kyoto's unique, atmospheric neighbourhoods.

from **\$1,439*** per person for 4 Day Kyoto City Explorer (Comfort Twin Room)

from **\$1,489*** per person for 4 Day Kyoto City Explorer (Main Building Standard Twin Room)

from **\$1,569*** per person for 4 Day Kyoto City Explorer (Standard Twin Room)

KYOTO CITY EXPLORER – HOTEL UPGRADE OPTIONS



HOTEL GRANVIA KYOTO

MAP
REF.
8

Located in the Kyoto Station Building, this deluxe hotel offers the perfect base to explore the many attractions of Kyoto. Within the complex you will find a department store, museum, a vast underground shopping mall and a plethora of dining options.

Occupying floors seven to 15 of the station complex, the hotel offers 536 beautifully appointed guestrooms with a range of amenities to ensure comfortable stay. Experience the spa and indoor pool, and enjoy the wide range of dining options.



Standard Room

HOTEL MONTEREY KYOTO

MAP
REF.
9

Hotel Monterey Kyoto combines the best of Kyoto's stylish culture with Britain's traditional heritage. Ideally located in the heart of Kyoto, this hotel has great shopping and restaurants at its doorstep. Each room combines a refined elegance with modern amenities including complimentary wireless internet. Indulge with a treatment from Spa Trinite, located on the top floor of the hotel with views overlooking the streets of Kyoto and surrounding mountains. Savour the creative dishes at the French restaurant, Escale.



Studio Room

HOTEL OKURA

MAP
REF.
10

Located in the city centre of Kyoto and adjacent to a subway station, this hotel makes a great place to base your stay. Within a short walk lies the historic Kyoto Imperial Palace and Nijo Castle. Rooms are modern and have large picture windows facing the city and offer panoramic mountain views. Rooms feature comfortable bedding with fine linens and special touches such as bathrobes and slippers. Select from a variety of dining options from French to Japanese cuisine, enjoy a dip in the indoor pool or keep your workout routine at the fully equipped gym.

from **\$1,619*** per person for 4 Day Kyoto City Explorer (Standard Twin Room)

from **\$1,625*** per person for 4 Day Kyoto City Explorer (Standard Twin Room)

from **\$1,705*** per person for 4 Day Kyoto City Explorer (Standard Twin Room)



Japanese Room

HATOYA ZUIHOKAKU

MAP
REF.
11

Within walking distance of Kyoto Train Station, Hatoya Zuihokaku offers Japanese-style accommodation. The traditional rooms feature a tatami floor and futon bedding with a private bath and complimentary wireless internet. After a long day of sightseeing, take a soak in the public indoor/outdoor natural hot spring baths located on the top floor of the hotel. Savour an extensive range of Kyoto style dishes at the hotel's restaurant.



Guestroom

HYATT REGENCY KYOTO

MAP
REF.
12

Situated in the peaceful Higashiyama Mountains of Kyoto, Hyatt Regency Kyoto is a short taxi trip from the train station. This Western-style property blends creative artwork and modern amenities to ensure a comfortable stay. Each spacious room is luxuriously furnished in warm colours and featuring Japanese hangings. Relax at the Japanese spa to recharge after a day of exploring. Enjoy a range of culinary experiences at the fine selection of restaurants.



Japanese Room

YOSHIKAWA RYOKAN

MAP
REF.
13

Tucked away in a traditional Kyoto street, this chic Ryokan combines traditional Japanese hospitality with luxury. Built over 100 years ago, the property features tatami mat rooms located around a stunning garden. Relax with a soak in the private cedar-wood onsen, dine in the tempura restaurant or enjoy a traditional meal served in your room. The heart of the city's restaurant and nightlife scene is within easy walking distance.

Includes: Dinner daily

from **\$1,769*** per person for 4 Day Kyoto City Explorer (Japanese Western Room)

from **\$2,055*** per person for 4 Day Kyoto City Explorer (Guest Room)

from **\$3,349*** per person for 4 Day Kyoto City Explorer (Standard Japanese Room)

KYOTO EXPERIENCES



Kyoto Cycling Tour Morning / Join-in

Spend the morning cycling along the ancient canals of Kyoto, learning about the history of this ancient city.

Travel along the Kamogawa River, taking in the views of the city's downtown. Visit Heian-Jingu Shrine and stroll through the expansive grounds at Nanzenji Temple. Discover the meaning of tranquillity as you cycle on the famous Path of Philosophy.

This tour is also available as a Private Tour, ask your Agent for details.

from **\$92*** per person
Minimum 2 people



Bento Box Cooking Class Morning / Join-in

This Bento cooking class is a great way to learn about typical Japanese dishes such as Sushi Roll, Tempura and Miso Soup. In addition, you will learn the cultural background of the well-known Japanese 'Bento'.

During the class, the instructor will demonstrate and explain the tricks to making these beautiful dishes, then you will get to prepare your own before enjoying the Bento lunch you just made!

from **\$126*** per person
Minimum 2 people



Kyoto by Night Gion Walking Tour 3 Hours / Private

Take a private Kyoto walking tour to explore the world of the Geisha and Kyoto's famed Gion entertainment district. Many of the buildings in this area of Kyoto are the traditional wooden machiya merchant houses which were built with narrow façades, but extend up to 20 metres deep. Gion today is filled with shops, restaurants, and the ochaya (teahouses) where Geisha entertain and the okiya (boarding houses) where they live.

Note: Tour does not operate on Sundays.

from **\$188*** per person
Minimum 2 people



Kyoto Perfect Tour Full Day / Join-in

Discover the great number of landmarks the ancient city of Kyoto has to offer. Visit World Heritage listed Kiyomizu-dera temple with its panoramic views of Kyoto, as well as Sanju-san-gen-do temple and its 1,000 'Senju Kannon' statues. See the torii gates of Fushimi Inari Taisya shrine, home to the guardian gods for business success, family well-being and traffic safety. Visit Arashiyama on the west side of Kyoto before enjoying a Japanese-style lunch. Explore Togetsu-kyo bridge, Sagano Bamboo Forest and Tenryu-ji Temple. Finish the day with a visit to Kinkaku-ji, the very beautiful Golden Pavilion.

from **\$224*** per person
Minimum 2 people



Nara Walking Tour Half Day / Private

Travel by train to Nara, famous for its parkland, wild deer and temples. Visit stunning Todaiji Temple, one of Japan's most famous and historically significant temples, which is home to various national treasures. The Daibutsuden (Great Buddha Hall) is one of the world's largest wooden buildings. As one of Japan's best-known temples, it enshrines a gigantic bronze statue of Buddha. Spend time mingling with Nara's free-roaming deer. Continue on to Kofukuji Temple, a pleasant walk of about 15 minutes to see the five-storey pagoda, the second highest in Japan.

from **\$249*** per person
Minimum 2 people



Tea Ceremony with Tea Master Half Day / Private

Enjoy a traditional tea ceremony and learn the sophisticated philosophy behind serving a bowl of tea. You will be welcomed by your tea master before entering the room designated for the tea ceremony. Your tea master will begin the ceremony – a choreographed art which requires years of study to master. When the tea is ready, sip the delicious brew and savour the traditional Japanese sweet which accompanies it. You can even try your hand at preparing the tea with the help of the tea master.

from **\$274*** per person
Minimum 2 people

KYOTO EXPERIENCES



Kyoto Tour

Half Day / Private

Sample the treasures in Kyoto with your English-speaking guide, beginning with a visit to the Nijo Castle. Built in 1603 as a residence for the first Tokugawa shogun, the palace is famous for squeaky wooden floors designed to betray the approach of unwelcome visitors. Then discover Kinkaku-ji, the glittering Golden Pavilion, one of Japan's most cherished sites. This elegant, gilded structure was built in the 14th century as a retirement villa.

from **\$282*** per person
Minimum 2 people



Arashiyama Walking Tour

Full Day / Join-in

With your local English-speaking guide, travel by train to Arashiyama and spend time discovering the area. Explore Tenryu-ji Temple, one of Kyoto's best Zen temples with a beautiful landscaped garden. Enjoy walking through Sagano Bamboo Grove. Visit Jojakkoji Temple which has a quiet and sacred atmosphere. Continue to Togetsu Bridge which spans Katsura River and means 'moon crossing'. As you explore the temples, take in the beautiful mountain background of the Arashiyama area. Return to Kyoto by train or public bus.

This tour is also available as a Private Tour, ask your Agent for details.

from **\$314*** per person
Minimum 2 people



Fushimi Inari & Sake Tasting

Half Day / Private

The mountain complex of Fushimi Inari Shrine is one of the most breathtaking sites in Kyoto. With your local English-speaking guide, travel by public transport to Fushimi. Walk through the thousands of vermilion coloured 'torii', a traditional Japanese gate found at shrines.

Visit a sake brewery and sample the famous brew before enjoying lunch in a traditional machiya, a wooden townhouse developed in Kyoto which traditionally housed craftsmen, artisans and merchants.

from **\$336*** per person
Minimum 2 people



Hiroshima Day Tour

Full Day / Private

This is a great way to explore Hiroshima, a truly 'reinvented' city. Visit the Peace Memorial Museum, a sobering, yet educational experience. You will also see the famous Peace Memorial Park and a poignant cenotaph inscribed with all the known victims of the Hiroshima bomb, and the eerie A-Bomb Dome, a tragic city symbol, left standing in a ruinous state after more than 60 years. Here, board a fast ferry for the passage to Miyajima Island, home to Itsukushima Shrine, partly comprised of an offshore red 'torii' gate, one of Japan's most famous and photographed sites. Enjoy a glass of chilled white wine and oysters before boarding the ferry back to the mainland.

from **\$461*** per person
Minimum 2 people



Himeji Castle Tour

Full Day / Private

Travel by bullet train to Himeji, and visit Himeji Castle which was built in the early 17th century and has kept its original design since the time of construction. Take a local bus and ropeway to Engyō-ji Temple. Mt Shosha (Shoshazan) is the site of Engyō-ji, an atmospheric temple complex with a history of over 1,000 years. It is also a famous film location for the Hollywood movie 'The Last Samurai'. Catch the ropeway and local bus back to Himeji train station, before returning to Kyoto by bullet train.

from **\$533*** per person
Minimum 2 people



Geisha Performance & Dinner

2 Hours / Private

Spend an incredible evening in Kyoto dining at an exclusive private restaurant accompanied by a Maiko – an apprentice Geisha. Enter your private dining room to start your kaiseki meal, a type of art form which balances the taste, texture, appearance and colours of food. During your meal a Maiko will come to your private room to perform traditional arts and to talk with you.

This is a fantastic opportunity to experience a highly exclusive service which is usually only available through a personal introduction.

from **\$711*** per person
Minimum 2 people

Osaka & Surrounds

Dotted with cultural attractions such as Osaka Castle and the Osaka Aquarium Kaiyukan, Osaka is even better known for its pragmatic locals. At night the city lights up with neon, and residents and travellers alike explore the city for tasty food and entertainment.



Osaka Castle



Japan's Kitchen

Osakan's know their food. Experience 'kuidaore' (loosely meaning, to eat yourself to ruin) with savoury pancakes, crumbed skewers, octopus balls and Japanese barbecue. There's good reason Osaka is known as the nation's kitchen.



Dotonbori

Neon lights, flashing billboards and colourful signs dazzle the eye in Dotonbori. Rows of small restaurants, bars and open-air ramen stands offer up the food and nightlife Dotonbori is well known for.



Osaka Castle

A prominent symbol of Osaka, and one of the most famous landmarks in Japan, Osaka Castle features turrets, moats and ornate gold detailing. The castle offers breathtaking views from the top floor.

Osaka City Explorer

3 DAYS FROM \$845 PER PERSON*

For a large Japanese city, Osaka has a laidback feel where it's all about great food and friendly locals. For the perfect introduction, choose our Osaka City Explorer. See the famous sights such as the Osaka Castle, and explore the fantastic Osaka Aquarium Kaiyukan.



Osaka



Osaka

DAY 1 Osaka

On arrival at Kansai Airport, meet your local representative and be transferred to your hotel. Enjoy free time exploring Osaka independently. Offering cultural delights amid a modern Japanese city, Osaka retains an old-world ambience. As night falls the small streets and alleyways shine bright with neon lights and bustle with people visiting local food stalls in search of their favourite dishes. Stay the next two nights at Karaksa Hotel Namba.

DAY 2 Osaka

With your local English-speaking guide, discover Osaka on a full day tour. Japan's second largest city was rebuilt after the Second World War. Visit the famous Osaka Castle built in 1583, before walking to the nearby river boat dock to board the Aqua Liner for a cruise along the river. Explore the Osaka Aquarium Kaiyukan, one of the largest in the world. (B)

DAY 3 Osaka

Enjoy free time until your onward journey. (B)

INCLUDES:

- 2 nights hotel accommodation at Karaksa Hotel Namba (Standard Twin Room)
- Transport in air-conditioned vehicles
- Osaka full day tour
- Entrance fees
- Local English-speaking guide
- Airport transfer from Kansai Airport to Osaka accommodation
- Meals as indicated (B = breakfast)

UPGRADE your hotel or extend your stay to experience everything this beautiful city has to offer. See pages 38 and 39 for other hotel options and experiences.



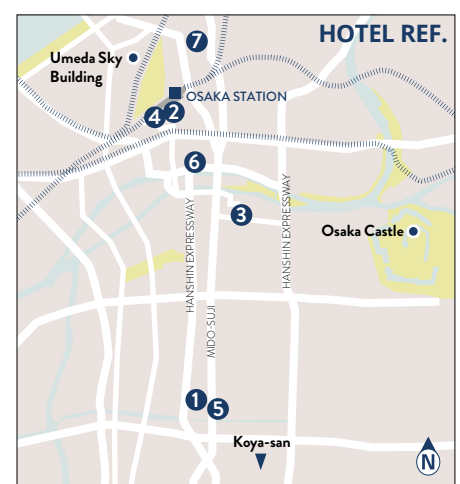
Standard Room

KARAKSA HOTEL NAMBA



MAP
REF.
1

Karaksa Hotel Namba is a five minute walk from the popular tourist destinations of Dotonbori and Shinsaibashi-suji shopping streets. Each room is comfortably appointed with a range of amenities including rain shower, refrigerator, hair dryer and complimentary wireless internet. In your room, you'll also find pyjamas and slippers for your comfort. Rooms are contemporary in style with clean lines. Enjoy a meal at the bright and spacious breakfast restaurant, offering a variety of Western-style items. The hotel offers many other services including luggage storage and a guest laundry.



OSAKA CITY EXPLORER – HOTEL UPGRADE OPTIONS

HEARTON HOTEL NISHIUMEDA

**MAP
REF.
2**

Ideally located in the heart of Osaka, Hearton Hotel Nishiameda is an easy walk to JR Osaka train station and to popular shopping and dining areas including Dotonbori and Shinsaibashi. With plenty of restaurants, shopping and entertainment options at your doorstep, this is a great choice for your stay in Osaka.

Each hotel room has modern and stylish décor and contemporary facilities giving a feel of convenience and comfort. Enjoy an à la carte dinner at the Restaurant Garden Café.


**MITSUI GARDEN HOTEL OSAKA
YODOYABASHI**

**MAP
REF.
3**

With a good location in Osaka's Kita business area, this property is an easy walk to vibrant restaurants, shops and the city's main train station. Each room boasts warm wooden fixtures and dark carpets for a simple yet elegant style. Rooms feature television with satellite channels, refrigerator, kettle, hair dryer and essential bathroom amenities.

Enjoy Japanese cuisine at the hotel's restaurant, grab a snack from the convenience store and make use of the complimentary smart phone and wireless internet.


HOTEL MONTEREY OSAKA

**MAP
REF.
4**

Situated within walking distance of a train station, Hotel Monterey Osaka features a quiet outdoor courtyard and European-style rooms. With soft pastel walls, each room is designed to look like rooms in Vienna's Schonbrunn Palace.

Rooms feature comfortable beds, air-conditioning, complimentary wireless internet, hair dryers, use of a handy smart phone, pyjamas and slippers. Dining is a treat at the hotel. The French restaurant boasts delicate dishes in a lavish atmosphere reminiscent of medieval Europe, while the Japanese restaurant serves authentic meals using the finest of seasonal ingredients.

from **\$885*** per person for 3 Day Osaka City Explorer (Standard Twin Room)

from **\$899*** per person for 3 Day Osaka City Explorer (Standard Twin Room)

from **\$925*** per person for 3 Day Osaka City Explorer (Standard Twin Room)


CROSS HOTEL OSAKA

**MAP
REF.
5**

With bright, contemporary, well-equipped rooms overlooking ginkgo trees, this hotel is well-located in central Osaka. Each room is bathed in natural sunlight and features a deep soaking bath. Facilities include LCD television, hair dryer, refrigerator and complimentary wireless internet. Enjoy a delicious meal at one of the stylish restaurants, choose a more casual dining experience at the café, or chill out away from the hustle and bustle with a cocktail at the bar.


ANA CROWNE PLAZA OSAKA

**MAP
REF.
6**

This chic hotel is just a short walk from the Kitashinchi dining and entertainment district and overlooks the beautiful Dojima River. Located close to Shin-Osaka's Shinkansen Station, ANA Crowne Plaza Osaka is the perfect base for discovering Osaka as well as nearby regions such as Nara and Kyoto. All rooms are spacious and bright with a contemporary feel. With a range of bars and restaurants, you'll be spoilt for choice, with Japanese, Chinese and Teppanyaki to choose from. Work out at the well-equipped fitness centre, take a dip in the indoor swimming pool or relax in the sauna.


HOTEL HANKYU INTERNATIONAL

**MAP
REF.
7**

Conveniently located, Hotel Hankyu International is a three minute walk to the closest train station. Each elegant room is situated on the 26th floor or higher of the building which ensures beautiful city views.

Enjoy staying in sophisticated rooms styled in dark tones, with features including LCD television, mini bar, complimentary wireless internet and hair dryer. Wining and dining at the hotel is an elegant affair with beautiful spaces adorned with chandeliers and rich furnishings. The property boasts French, Japanese and Chinese restaurants as well as a great bar.

from **\$939*** per person for 3 Day Osaka City Explorer (Standard Twin/Superior Double Room)

from **\$975*** per person for 3 Day Osaka City Explorer (Regular Floor Room)

from **\$1,109*** per person for 3 Day Osaka City Explorer (Moderate Double Room)

OSAKA EXPERIENCES



Osaka Walking Tour Half Day / Join-in

Spend the afternoon discovering Osaka with an English-speaking local guide on a walking tour.

Travel by foot and public train to Osaka Castle. Built in 1583, the famous landmark played an important role in the unification of Japan during the 16th century. Spend approximately one hour exploring the castle and its grounds before taking the Aqua Liner, a circular boat cruise from Osaka Castle port. Return to Osaka train station where the guide will provide information on how to return to your hotel by train and walking independently.

from **\$152*** per person
Minimum 2 people



Osaka Food Discovery Full Day / Private

Discover Osaka's Dotonbori area, a neon-filled street and fine example of 'the nation's kitchen' with a plethora of culinary delights on offer. Explore Sennichimae Doguyasuji Shopping Street to see everything that a chef or restaurateur could want. Continue to Kuromon Ichiba Market, with over 170 shops that contain all kinds of fresh local delicacies including fresh seafood. Visit the Momofuku Ando Instant Ramen Museum, an experience-based food education museum. Wander through the Instant Ramen Tunnel before sampling a custom cup of noodles at the My Cup Noodle Factory and learn the production process of cup noodles.

from **\$376*** per person
Minimum 2 people



Osaka Day Tour Full Day / Private

Meet your local English-speaking guide to begin your exploration of Osaka, Japan's second largest city.

Visit the famous Osaka Castle built in 1583, and then walk to the nearby river boat dock to board the Aqua Liner for a cruise along the river. Visit the Osaka Aquarium Kaiyukan, one of the largest in the world.

With the assistance of your local guide, this tour can be tailored to your interests.

from **\$412*** per person
Minimum 2 people



Okunoin Temple



Mt Koya Dinner



Tentokuin Shukubo

Koya-san World Heritage Experience 2 Days

DAY 1 Osaka to Mt Koya

Travel by train, cable car and local bus to Mt Koya. One of the most rewarding places to visit in Kansai is the World Heritage listed site of Koya-san. The site provides a delightful window into Japan's Buddhist culture in a spectacular natural setting.

Spend a quiet night in one of Koya-san's temple lodgings, called a Shukubo. Escape the hustle and bustle of Osaka and Kyoto and relax in pure tranquillity. From history and contemporary religious practices to nature and gastronomy, you choose what you want to do. Visit the temples of Kongobuji and Garan or enjoy trekking beautiful pilgrimage trails. Feast on unique vegetarian food for dinner. Overnight at Tentokuin Shukubo. **(D)**

DAY 2 Mt Koya to Osaka

Rise early to listen to the monks chanting, an enlightening experience. Following breakfast, travel to Osaka and enjoy free time until your onward journey. **(B)**

Note: Meals as indicated (B = breakfast, D = dinner).

from **\$269*** per person
Minimum 2 people

Ryokans

Staying in a Ryokan is a unique experience of traditional Japan. More than just a place to stay, a Ryokan experience is a highlight of most travellers' journeys, not least because of the warm hospitality which accompanies it.



Iwaso Miyajima



The Experience

A Ryokan is a traditional Japanese inn, where it is more important to maintain the appearance and atmosphere rather than provide modern conveniences. Traditional Japanese dining is an integral part of the experience.



What To Expect

It is customary to remove your shoes at the entrance. A pair of slippers will be provided by your hosts. Your futon will be packed away during the day. Many hosts speak very little English which simply adds to the charm.



RYOKANS


**YOROZYU YUDANAKA,
NAGANO**

 MAP
REF.
①

Yorozyu is a landmark onsen Ryokan in Nagano adjacent to Jigokudani Yaen-koen known for its snow monkeys. In your room, find traditional features such as tatami mats, low table and chairs as well as shoji screens. The property features a historic main onsen bath – 'Momoyama-buro', and an expansive outdoor bath set in a formal Japanese garden. Meals feature dishes representative of Northern Nagano and are served in the main dining horai.

Includes:

- 3 nights accommodation (Main Wing Japanese Room)
- Breakfast and dinner daily

 from **\$899*** 3 nights
per person

**OKUNOIN HOTEL TOKUGAWA,
NIKKO**

 MAP
REF.
②

This small guesthouse offers a range of beautifully appointed guestrooms and a Japanese garden. Choose from a Japanese or Western room, all feature natural tones and the clean lines of Japanese style. Enjoy views out to the abundant nature of Nikko. Facilities include a bathroom, coffee maker, television and wireless internet. Relax in the open-air hot bath surrounded by seasonal colours and enjoy local cuisine and sake at the restaurant.

Includes:

- 3 nights accommodation (Standard Japanese Room)
- Breakfast and dinner daily

 from **\$1,229*** 3 nights
per person

**IWASO MIYAJIMA,
MIYAJIMA**

 MAP
REF.
③

This property is the most famous Ryokan on the island of Miyajima, just off the coast of Hiroshima. Rooms and cottages built in the 1900s boast supreme facilities with a traditional Japanese atmosphere. Though each room is different in design, all are integrated into the surrounding environment. Enjoy relaxing in the indoor bath or open-air bath with the pleasant sound of the stream, and the occasional deer passing by.

Includes:

- 3 nights accommodation (Shinkan New Wing Room)
- Breakfast and dinner daily

 from **\$1,229*** 3 nights
per person

**YUFU-NO-GO SAIGAKUKAN,
YUFIIN**

 MAP
REF.
④

Located a five minute drive from Yufuin Station, this traditional Japanese-style inn offers beautiful views of Mt Yufu from the restaurant and outdoor bath. Each room offers a haven of peace and harmony with some having courtyard views and others boasting grand views of Mt Yufu. Experience traditional food with flavours of the season, rent a bicycle and explore the beautiful surrounds or soak away the day in the hot spring onsen.

Includes:

- 3 nights accommodation (Japanese Western Room)
- Breakfast and dinner daily

 from **\$1,279*** 3 nights
per person

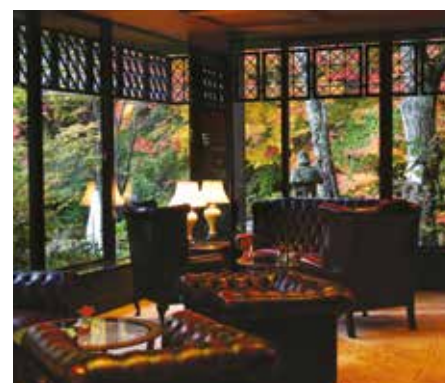
**HIDATEI HANAUGI,
TAKAYAMA**

 MAP
REF.
⑤

Located in a tranquil, nature-rich area with fantastic seasonal views, Hidatei Hanaougi is a glamorous, Japanese-style inn. Rooms feature Japanese timbers and soothing colours giving a natural, relaxing feeling. All rooms are comfortable and traditional, with tatami mats, shoji screens and low table and seating. Enjoy seasonal Hida Takayama cuisine and local sake in your room or in the dining room. A natural hot spring is also a big drawcard.

Includes:

- 3 nights accommodation (Standard Room)
- Breakfast and dinner daily

 from **\$1,329*** 3 nights
per person

**TOBIRA ONSEN MYOJINKAN,
NAGANO**

 MAP
REF.
⑥

Situated in the mountains, this family-owned lodge is unique among Ryokans as it offers multiple dining and accommodation options. The property is located just steps from Tobira Hot Springs. Make yourself at home in one of the Japanese-Western rooms featuring air-conditioning, fireplaces and flat screen televisions. Take advantage of wonderful dining experiences and recreation opportunities such as hot springs.

Includes:

- 3 nights accommodation (OTAKA Japanese Room)
- Breakfast and dinner daily

 from **\$1,359*** 3 nights
per person

Regional Japan

Regional Japan has so much to offer. Uncover the old-world feel of Takayama, the lovely gardens and Geisha district of Kanazawa, and the history and culture of Hiroshima. Spend time in Okinawa for pristine beaches and turquoise water.



Takayama

Often described as 'Little Kyoto', Takayama is known for its beautifully preserved old town, rural charm and general old-world feel. Discover ancient shrines, manicured bonsai gardens and local-style restaurants.



Okinawa

With a sub-tropical climate, Japan's southern island of Okinawa is the perfect destination for swimming, snorkelling and other water-based activities. Try Okinawa's cuisine, distinct from the rest of Japan, it is said to promote long life.



Shirakawago Explorer

2 DAYS FROM \$319 PER PERSON*



Shirakawago



Shirakawago

DAY 1 Takayama to Shirakawago

This morning, make your own way to Takayama JR Station to board the highway bus to Shirakawago. Upon arrival in Shirakawago, make your own way to your Minshuku, a family-operated traditional farmhouse. Today is free to explore the tiny hamlet at leisure. Shirakawago is a must-see destination for those wanting to get to the heart of traditional Japan. Villagers designed unique gassho-zukuri buildings with steeply pitched thatched roofs designed to

withstand the heavy winter snowfall. Today 150 farmhouses remain; the only of their kind in Japan. The accommodation is basic with shared facilities. Guest numbers are small and the hearty food cooked over a traditional hearth or irori helps you feel a part of this unique place. Overnight in a Minshuku in Shirakawago. (D)

DAY 2 Shirakawago to Takayama/Kanazawa

Today is free to explore at your leisure until travelling back to Takayama or on to Kanazawa using the highway bus. (B)

INCLUDES:

- 1 night Minshuku accommodation (Standard Room without en suite)
- Transport on highway bus Takayama to/from Shirakawago or return to Kanazawa
- Meals as indicated (B = breakfast, D = dinner)

REGIONAL JAPAN HOTELS



Japanese Room

SUMIYOSHI RYOKAN, TAKAYAMA

This property is a traditional merchant house-style Ryokan built in the Taisho era of 1912. Located just a short walk from Miyagawa Morning Market in the heart of Takayama, Sumiyoshi Ryokan is the ideal base to discover all that Takayama has to offer. Traditional Japanese-style guestrooms feature shared bathroom facilities and offer views of either the river or garden. Rooms feature air-conditioning, tea and coffee making facilities and a hair dryer. Soak in the indoor onsen or relax in the tranquil garden.

Includes:

- 3 nights accommodation (Japanese Room)
- Breakfast daily

from **\$485*** 3 nights
per person



Standard Double Room

BEST WESTERN HOTEL TAKAYAMA

Ideally located in the heart of Takayama, Best Western Hotel Takayama has been renovated. The hotel is within walking distance of all major attractions, shopping centres and JR Takayama Train Station. Relax in the comfort of your room which features modern amenities such as flat screen televisions and wireless internet. Enjoy traditional Japanese dining in the restaurants followed by a drink at the bar.

Includes:

- 3 nights accommodation (Standard Double Room)
- Breakfast daily

from **\$515*** 3 nights
per person



Standard Room

HOTEL ASSOCIA TAKAYAMA RESORT

Set in the southwest of Takayama city amid the beautiful Takayama Highlands, Hotel Associa Takayama Resort soars 640 meters above sea level. Rooms are spacious with a natural and elegant atmosphere and boast superb views of the northern Japanese Alps. Experience authentic French cuisine in the Rosiere Restaurant, try Japanese dishes at the Ka-un Japanese restaurant and take a soak in the indoor onsen. The resort offers a free shuttle to JR Takayama Station.

Includes:

- 3 nights accommodation (Standard Twin Room)
- Breakfast daily

from **\$615*** 3 nights
per person

REGIONAL JAPAN HOTELS



Moderate Double Room

HOTEL VISTA KANAZAWA

MAP
REF. 2

Located just a five minute walk from Kanazawa Station, Hotel Vista Kanazawa is a modern Japanese-style hotel. Rooms are styled in neutral colours with Japanese features and boast up-to-date facilities including air-conditioning, flat screen televisions and complimentary wireless internet. The hotel has a great public bath, restaurant and offers 24 hour reception.

Includes:

- 3 nights accommodation (Double Room)
- Breakfast daily

from **\$415*** 3 nights
per person



Standard Twin Room

KANAZAWA MANTEN HOTEL
EKIMAEMAP
REF. 2

Just a short walk from Kanazawa station, this hotel is within easy access of shops and just a short bus ride to Kanazawa's old quarter, where attractions such as the Nomura Samurai House, Kanazawa Castle and the Omicho seafood market are located. Rooms are compact yet comfortable and boast complimentary wireless internet and air-conditioning. Relax in the open-air bath that has a great feeling of the outdoors or enjoy a meal at one of the many restaurants close to the hotel.

Includes:

- 3 nights accommodation (Standard Twin Room)
- Breakfast daily

from **\$455*** 3 nights
per person



Standard Room

ANA CROWNE PLAZA KANAZAWA

MAP
REF. 2

Ideally located directly in front of Kanazawa Station, ANA Crowne Plaza Kanazawa is just a short drive from the city's main attractions. Each hotel room has modern and stylish décor and contemporary facilities including complimentary wireless internet and air-conditioning. Enjoy a variety of food and drink options throughout the day, from fine dining to lighter meals at the restaurant and lounge or opt for the convenience of in-room dining.

Includes:

- 3 nights accommodation (Standard Twin Room)
- Breakfast daily

from **\$709*** 3 nights
per person



Standard Room

MITSUI GARDEN HOTEL
HIROSHIMAMAP
REF. 3

This contemporary hotel is located near the Hiroshima Peace Memorial Park and just a short walk from most attractions. Rooms are modern and large by Japanese standards, and decorated in chic, neutral tones. Rooms feature modern conveniences such as wireless internet, air-conditioning and cable television. Choose from a Japanese restaurant or a delicious French restaurant, or try the café for a more casual meal.

Includes:

- 3 nights accommodation (Standard Double Room) • Breakfast daily
- Return transfers from Hiroshima Station

from **\$745*** 3 nights
per person



Standard Room

HOTEL GRANVIA HIROSHIMA

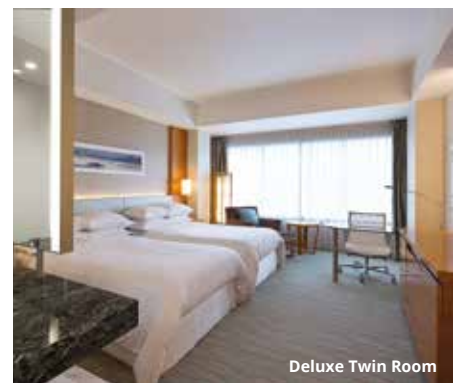
MAP
REF. 3

A stay at Hotel Granvia Hiroshima places you in the heart of Hiroshima, minutes from Hiroshima Toshogu and close to Hiroshima Castle. Make yourself at home in one of the 407 air-conditioned rooms featuring flat screen televisions, complimentary wireless internet and deep soaking bathtubs. Enjoy dining at the Japanese, Chinese and Western restaurants, grab a bite to eat at the café or enjoy your favourite drink at the on-site bar.

Includes:

- 3 nights accommodation (Standard Double Room) • Breakfast daily
- Return transfers from Hiroshima Station

from **\$885*** 3 nights
per person



Deluxe Twin Room

SHERATON GRAND HIROSHIMA
HOTELMAP
REF. 3

Sheraton Grand Hiroshima Hotel is just a short walk from Hiroshima Station and a 10 minute drive from the A-Bomb Dome. This hotel places you in the middle of the energy and excitement of Hiroshima, along with its historic sites and architecture. The spacious guest rooms feature contemporary furnishings and complimentary wireless internet. Swim in the indoor pool, work out at the gym or relax and recharge at the spa.

Includes:

- 3 nights accommodation (Deluxe King Room)
- Breakfast daily
- Return transfers from Hiroshima Station

from **\$909*** 3 nights
per person

REGIONAL JAPAN HOTELS

**MERCURE OKINAWA NAHA**MAP
REF.
4

Located right in front of Tsubogawa Monorail station, Mercure Okinawa Naha overlooks the Ounoyama Park across the Kokuba River and is around 10 minutes from Naha Airport by monorail, car or taxi. Rooms are decorated in a vibrant colour palette and are equipped with all essential facilities. Enjoy all day dining at the French-inspired bistro or choose to dine in your room. Surrounded by pristine beaches, Okinawa is the perfect destination for watersports such as snorkelling, canoeing and scuba diving.

Includes:

- 3 nights accommodation (Double Room)
- Breakfast daily

from **\$325*** 3 nights
per person

**OKINAWA KARIYUSHI URBAN
RESORT NAHA**MAP
REF.
4

Set in the Naha city centre district in front of a pier, Okinawa Kariyushi Urban Resort Naha is a few minutes' walk to DFS Galleria Okinawa and Yachimun Street and four kilometres from Naha Airport. Every room is fitted with a flat screen television, complimentary wireless internet, private bathroom and complimentary bathroom amenities. Enjoy ocean and harbour views from certain room types. The hotel boasts a multi-national restaurant with popular buffet breakfast and a great bar.

Includes:

- 3 nights accommodation (Standard Twin Room)
- Breakfast daily

from **\$395*** 3 nights
per person

**OKINAWA MARRIOTT RESORT
& SPA**MAP
REF.
4

An exclusive retreat, Okinawa Marriott Resort & Spa boasts a large garden pool and tranquil day spa. Each spacious room boasts an ocean view overlooking the East China Sea and features all modern conveniences such as air-conditioning, hair dryer and tea and coffee making facilities. Enjoy a wide range of restaurants and bars including the popular Ryu-bin-ka, or dine outside on the terrace and feast on a Japanese barbecue. Indulge at the day spa or relax by the pool while the children splash in the wading pool.

Includes:

- 3 nights accommodation (Standard Twin Room)
- Breakfast daily

from **\$705*** 3 nights
per person

**OKINAWA SPA RESORT EXES**MAP
REF.
4

Offering a great outdoor pool and watersports facilities, Okinawa Spa Resort EXES is set in beautiful Onna on Okinawa Island.

Rooms boast ocean views and feature high quality amenities by L'occitane in the private bathroom. Other extras include coffee machines, bathrobes and slippers. Tatami mat flooring and a low table and seating cushions provide a lovely Japanese feel. Modern facilities are available in all rooms including plasma televisions and complimentary wireless internet.

The resort has a sun terrace and a great outdoor pool. A warm indoor pool and round spa as well as a gym are also available. The area surrounding the resort is popular for snorkelling and windsurfing. Revive the heart, body and mind with a massage or body treatment, dine on authentic cuisine at the restaurant and enjoy the local liquor, Okinawa Awamori at the bar.

Includes:

- 3 nights accommodation (Standard Twin Room)
- Breakfast daily

from **\$649*** 3 nights
per person



Superior Room

Booking Conditions

Please read these conditions carefully as they set out the basis upon which we accept all bookings. We reserve the right to amend our booking conditions from time to time. Please check with your travel consultant for our up to date booking conditions, which are also available on insiderjourneys.com.au before making a booking.

Brochure validity: This brochure was printed on 12 December 2018 and is valid until 31 December 2019 and should be used only as a guide in relation to other dates. Exchange rates used when pricing this brochure are as at 7 November 2018. Please note that the content in this brochure is based on information supplied by Third Party Travel Providers and is subject to alteration with or without notice. Please check with your travel consultant about up to date prices, availability and information before making a booking.

Responsibility

1. Insider Journeys acts as an agent for the Suppliers (transport, tour, event or accommodation providers) who provide the various goods and/or services (Products). All bookings are subject to the terms and conditions and limitations of liability imposed by each Supplier. It is therefore important for you to obtain and read the applicable Supplier's terms and conditions as they may limit or exclude their liability to you.

In producing this brochure, we have used information provided by Suppliers. Irrespective of any measures taken by us to ensure the information contained in this brochure is accurate at the time of printing, Insider Journeys disclaims and will be exempt from liability in respect of anything misleading, false, incomplete or inaccurate and any errors, inaccurate description and all associated disappointment, loss, expense, damage, inconvenience, delay, death, shock, illness or injury, however caused.

Insider Journeys does not control the manner in which Products featured within this brochure are provided. Insider Journeys disclaims and will be exempt from liability for anything to do with the supply of such Products. This includes liability (whether as a matter of contract, tort, statute, restitution, or otherwise) for any direct, indirect or consequential loss, liability, claim, cost, expense, proceeding, demand, penalty, disappointment, death, injury, illness, shock, inconvenience or delay. This limitation of liability also applies irrespective of the cause, including negligence of us or a Supplier, withdrawal, cancellation or failure to provide a Product, delay, any variation in the Product, the provision of substitute Products or a change in the Supplier. Without limitation, Insider Journeys will not be responsible if the Product is not available due to inclement weather conditions or other acts of God, civil disturbances, fire, floods, acts of Government or any other authorities, accident to or failure of machinery or equipment or industrial action.

Prices for Travel Products

2. All pricing is reflected in Australian Dollars unless otherwise specifically denoted and is valid at time of publication but is subject to change. 'From' prices represent land only and low season twin share prices (unless otherwise clearly stated). Unless otherwise stated, prices include all government levies and airport taxes as at the date of publication. Dates, itineraries and prices are indicative only. Private Travel and Asia River Cruising prices are valid for travel during low season and will vary depending on date of travel. We will use our reasonable efforts to notify you of changes in prices. The Third Party Travel Provider may be required to impose surcharges depending on currency fluctuations, surcharges or other variables outside of its control. You acknowledge and agree that you shall be responsible for the prompt payment of all surcharges and price increases. A fee will apply for payments made by debit and credit cards. Please check this fee with us or your travel consultant when booking.

Minimum Booking Requirement & Service Fees:

3. The following minimum booking requirement and service fees will apply to a booking:
 - A service fee of A\$20 per booking will be charged for train and internal Asia sectors booked without other land arrangements (excludes Japan);
 - To book international airfares and products not contracted there is a minimum requirement of 4 night's accommodation;
 - Ticket delivery fees may be charged if a flight or train is the first service in a booking.

Deposit & full payment

4. A non-refundable deposit of A\$200 per person and passenger names as per passport are required 5 days after issuance of an invoice. Additional deposits may be required depending on the policies of the Third Party Travel Provider. Any additional deposits will be advised at the time of booking or on the invoice. Full payment is due and payable to us 65 days prior to the scheduled date of departure from Australia and will be notified to you in your confirmation of booking.
5. We are not responsible for any changes made by a Third Party Travel Provider to the balance due date and prices are not guaranteed until payment has been made in full and documents have been processed and issued to you. Failure to pay a deposit within 5 days from the date of confirmation or in full by the due date may result in the automatic cancellation of your booking without refund of monies paid, unless you have been unable to complete the booking and pay the balance by the due date, due to our fault.
6. Bookings made within 35 days of scheduled departure require full payment on request.
7. Payment for domestic flights and regional flights in Asia must be received within 3 days of booking to avoid automatic cancellation. All bookings are subject to availability at time of booking.
8. Groups – a non-refundable deposit of A\$500 is due within 5 days of confirmation. Final payment is due by 65 days prior to departure.

Cancellation by the traveller

9. All cancellations must be received in writing. No refunds will be made for unused services. Cancellations will be subject to the following cancellation fees applied per person, per confirmed booking:
 - for cancellations made more than 65 days before the scheduled date for departure from Australia – no refund of deposit;
 - for cancellations made between 10-65 days before the scheduled date for departure from Australia – a cancellation fee of 25%;
 - for cancellations made within 10 days of the scheduled date of travel arrangements – a cancellation fee of 100% applies.

Additional cancellation charges may apply according to the terms and conditions of the Third Party Travel Provider.

10. We will not charge a cancellation fee if:
 - you cancel your booking due to a breach by us of any of our obligations to you or due to our fault; or
 - the Third Party Travel Provider cancels your booking for no fault on your part.
11. Notwithstanding clause 9, cancellation of air, cruising, rail and other Third Party Travel Provider arrangements may be subject to fees in accordance with the terms you agree with the Third Party Travel Provider, which are separate to our cancellation fees. Refunds will not be given for unused or cancelled services after your arrangements have commenced.

Amendments by the traveller

12. Once itineraries are confirmed with a deposit on file, one amendment free of charge is permitted provided the amendment is made 65 days prior to departure. All amendments within 65 days prior to departure are subject to a A\$50 per booking amendment fee plus any additional fees charged by the Third Party Travel Provider.

Cancellation & amendments by Third Party Travel Provider

13. If the Third Party Travel Provider changes any part of your booking for reasons beyond its control, for example, if a Third Party Travel Provider changes its schedules, overbooks, or if there are any changes in applicable surcharges, fees or taxes, we will use our reasonable endeavours to notify you. If any such changes result in your Travel Product costing more or otherwise being materially different, then you may cancel the Travel Product and we will refund any monies already paid less any fees charged by us under these terms and conditions and by the Third Party Travel Providers under the terms and conditions you agreed with them. Please check with your consultant before cancelling or amending a Travel Product in these circumstances as some Third Party Travel Providers may charge cancellation fees up to 100% of the Travel Product's price as per their terms and conditions.

Travel documents

14. Travel documents will be issued after final payment has been received. Travel documents may include special conditions including restrictions such as baggage size and weight limits. Travel documents are not transferable. All airline tickets must be issued in the name of the passport holder and some carriers will deny carriage if the name varies and the booking may be cancelled. We have no responsibility for any loss or damage arising from the incorrect entry of a passenger's name or as a result of the Third Party Travel Provider's policies. It is your responsibility to collect all travel documents prior to travel.

Airfares – cancellations & amendments

15. Prices displayed in this brochure or provided by us, do not include airfares from or to your departing destination, unless specified. All flights bookings are subject to the carrier's conditions of carriage. Cancellation and refund policies associated with airfares vary according to airfare terms and conditions and the relevant airline. It is your responsibility to understand the terms and conditions that relate to your airfare and contact the relevant airline if you require further information. It is your responsibility to contact the airline prior to departure to ensure there is no change to the scheduled departure time. Please ensure all flight details are correct prior to ticketing as we cannot assume responsibility for incorrectly issued flights. We do not offer advice on Frequent Flyer eligibility on flights.

Other cancellation & amendments

16. A Third Party Travel Provider may cancel, reschedule or amend any itinerary in accordance with operating requirements or circumstances beyond its control. This includes alterations to cruise itineraries and schedules including change of embarkation and disembarkation points. We are not responsible for any other travel arrangement affected due to the Third Party Travel Provider's cancellations or amendments. Amendments beyond the Third Party Travel Provider's control may involve a surcharge for the additional or amended services.

Accommodation ratings

17. The ratings featured in this brochure will provide a general indication of the standard of accommodation and may alter throughout the year due to a change of circumstance. These are our views and are not related to any other rating system. We recommend checking with your travel consultant to find the accommodation that best suits your needs and budget.

Publicity

18. You agree that we may use images of you taken during the trip and any comments made in writing by you regarding the trip, without recourse to you and without compensation to you, for publicity and promotion purposes only through whatever medium we choose.

Errors & omissions

19. We reserve the right to correct any errors in rates or content quoted or calculated for any package, with immediate effect. We will use our reasonable endeavours to notify you of such corrections.

Privacy

20. You acknowledge and agree that we may disclose some or all of your personal information as outlined in our Privacy Policy. The terms of our Privacy Policy are incorporated into these terms. A copy of our Privacy Policy is available on www.insiderjourneys.com.au.

Jurisdiction & Law

21. This brochure and all matters arising out of or in connection with it and all terms are governed by the laws applicable in the State of New South Wales. By acquiring the Booking and Advisory Services from us, you consent and submit to the exclusive jurisdiction of the Courts of New South Wales.

Definitions

"We" and **"us"** means Helloworld Travel Services (Australia) Pty Limited (ABN 84 003 237 296), trading as Insider Journeys.

"You" means any person who acquires the Travel Product and Booking & Advisory Services directly from us or indirectly through an independent travel agent and includes any person who acquires a Travel Product (whether or not the Booking & Advisory Services were acquired by another person).

“Booking & Advisory Services” means services provided by us to you in assisting you to acquire a Travel Product from a Third Party Travel Provider and includes advisory and consulting services, and providing a facility to enter into transactions with us and Third Party Travel Providers (whose details and Travel Products appear in this Brochure).

“Third Party Travel Provider” and **“Suppliers”** means the company or person who provides you with the Travel Product on terms and conditions agreed with you.

“Travel Product” means the service or product provided by a Third Party Travel Provider, for example, an airline or a hotel.

ANNEXURE TRAVEL TIPS FOR TRAVEL PRODUCTS

These tips are not legally binding terms and conditions. You should obtain and read the Third Party Travel Provider's terms and conditions which are legally binding on you.

Travel Insurance

We strongly recommend you take out appropriate travel insurance to cover your travel arrangements.

Passports, Visas & Health Requirements

Visas, including transit visas, are the passenger's own responsibility. For more information please log on to: www.dfat.gov.au or www.smartraveller.gov.au. Please check with the respective Embassy or Consulate of each country that you are travelling to, as many destinations require visas for both Australians and non-Australian passport holders. For more information, log on to www.visalink.com.au. You need to ensure that you have at least 6 months validity on your passport from the date of your departure return. It is your responsibility to ensure that you are aware of any health requirements for your travel destinations. Vaccinations are strongly recommended for certain destinations. You need to contact your local doctor who will advise you of these

requirements. Please note that vaccinations may be recommended some period in advance of travelling.

Ticketing

For international and domestic departure, e-tickets will be issued upon payment and completion of the booking process. In some instances, an e-ticket on the flights or fares selected may not be able to be issued. Bookings that cannot be issued as an e-ticket will have to be changed to comply with e-ticket regulations. All other travel documentation, such as hotel, car hire, transfer and tour vouchers will be emailed to you as an e-document. Should the Third Party Travel Provider issue paper vouchers, these will be posted to you.

Frequent Flyers & Special Requests

For more information on whether your airfare is eligible for Frequent Flyer rewards, please contact the airline directly. When booking online, please ensure that you have entered your correct number in the special section featured in the booking engine. For Call Centre bookings, please advise your Frequent Flyer details and these will be added to your reservation. We do not take any responsibility should an airline not register your trip. You should retain copies of your air ticket and boarding pass. Special requests will be passed on to the Third Party Travel Provider but cannot be guaranteed.

Special needs

Travellers with a physical or mental disability that may require special assistance during their trip must advise us of their needs upon booking and declare all pre-existing medical conditions. This enables us to ensure the suitability of each booking to the individual traveller.

Bedding configuration

Requests for specific bedding types must be made at the time of booking, however, cannot be guaranteed. Note that double rooms can be fitted with either double or twin beds, and note also that single rooms are often smaller

than other rooms. Triple rooms usually comprise a twin bed room with an additional sofa bed, roll-away bed or a fold-away bed for a third person.

Travelling with children

Where a child stays for free in a room sharing with two paying adults, generally the hotel will expect the child to share the parent's bed and will not provide an extra bed. Additional charges may be levied for child meals. Where a child rate is provided in this brochure, an extra roll or fold-away bed is usually provided. Children are charged an adult rate if staying in a room without adults.

Complaint Handling

In the unlikely event that you are unsatisfied with any aspect of your Travel Product, you must immediately notify the Third Party Travel Provider of your Travel Product or travel consultant (please refer to your pre-departure guide) to ensure we are given the opportunity to address and attempt to resolve any issue that you may raise at the time they occur. If a problem cannot be resolved to your satisfaction and you wish to pursue this matter further you must write to us within 28 days upon your return to the following address:

Attention Customer Service:

Level 7, 197 Coward Street, Mascot, NSW 2020

Or: customerservice@insiderjourneys.com.au

You must provide your booking reference number and full details of your complaint to allow us the opportunity to respond.

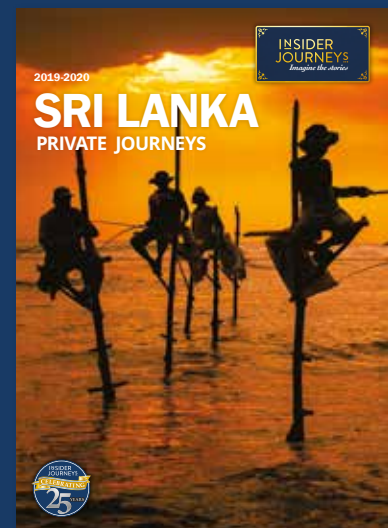
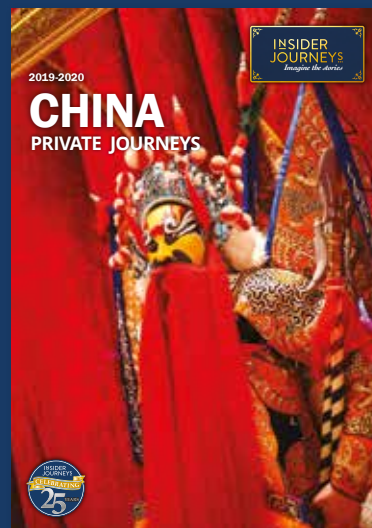
Photographers

Images used in this brochure are supplied by Japanese National Tourism Organisation, Tokyo Convention and Visitor Bureau, Chris Bryan, Hatanaka, Satoshi Imai, Taitetsu Kaneshiro, Kiyotaka Kitajima, Ryosuke Naito, Junya Okada, Toshiharu Sakai, Imai Satoshi, Lisa Sawers, Kitty Sheridan, Sibasakijunji and Hayley Watts.



Koriyama Castle, Nara

GAIN A GENUINE INSIDER'S VIEW WITH INSIDER JOURNEYS



Pick up one of our brochures from your travel agent or contact us for further information on accommodation, tours and itineraries.

To book, see your preferred Travel Agent or **insiderjourneys.com.au** for information

Building B, Level 7, 197 Coward Street, Mascot NSW 2020 Australia

ENQUIRIES

Customer Enquiries

T: 1300 365 355

E: info@insiderjourneys.com.au

W: insiderjourneys.com.au

Travel Agent Enquiries

T: 1300 362 777

E: agents@insiderjourneys.com.au



Accredited Member Of IATA, ATIA, PATA, ACTW. ABN 84 003 237 296
Offices in Sydney, London, Los Angeles, Saigon, Danang, Hanoi,
Siem Reap, Phnom Penh and Luang Prabang.

Your Travel Agent